

INSTRUCTION



10X10FT-BOOTH-M

STEPS

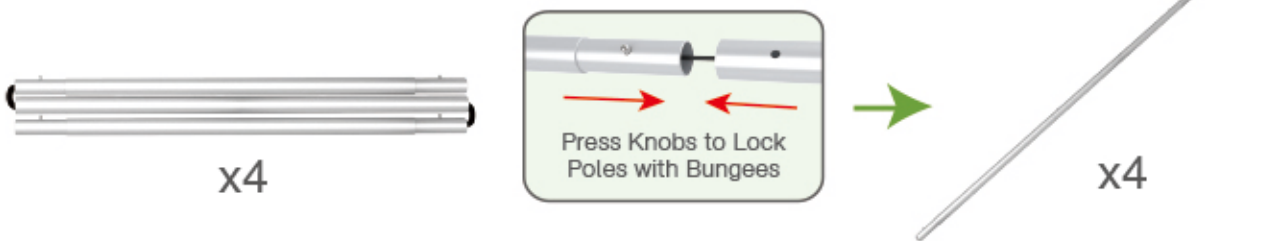
(1) Hardware



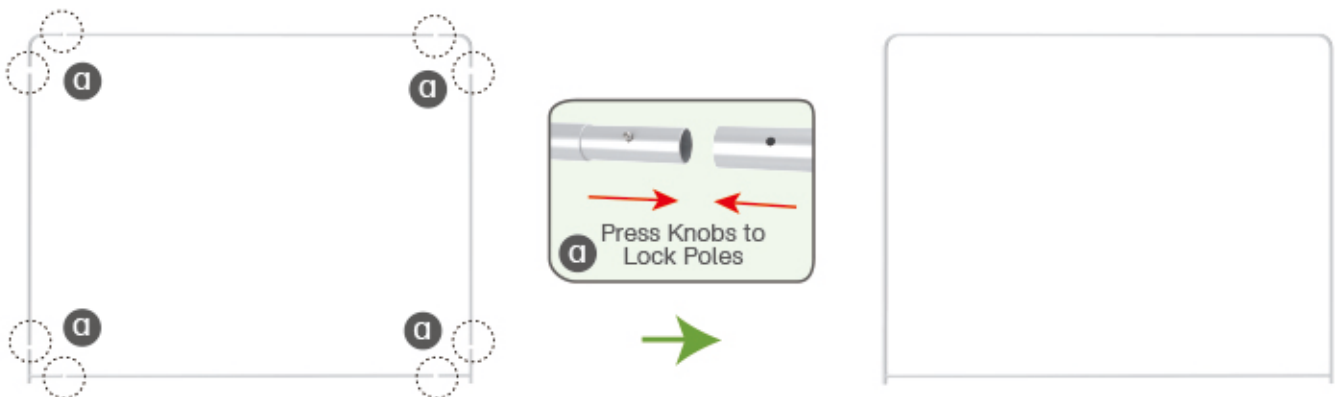
(2) Printed Graphic Fabric Banner (Optional)



STEP 01 Connect to make long poles according to labelings.



STEP 02 Connect long poles with corner poles according to labelings.

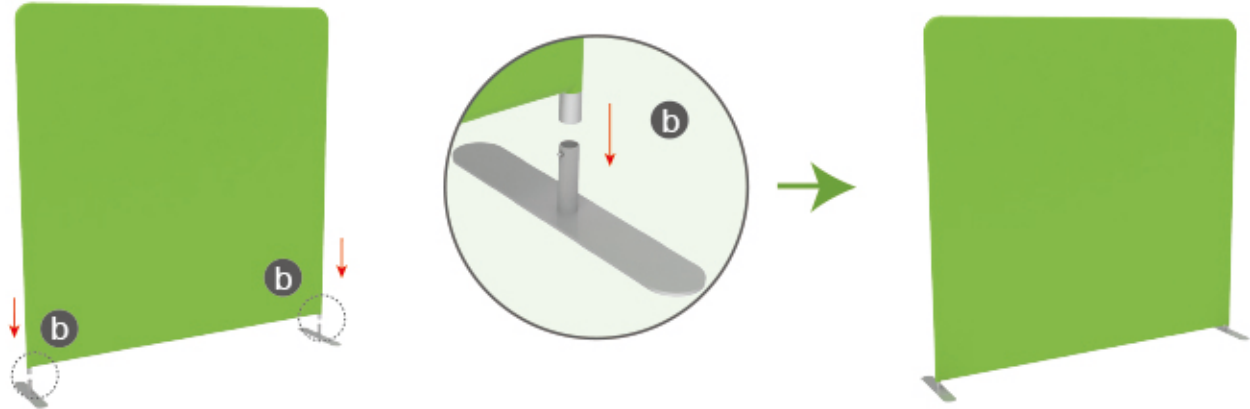


STEP 03 Slide fabric banner on frame from top and zip up at bottom.



STEPS

STEP 04 To assemble the stand feet in position



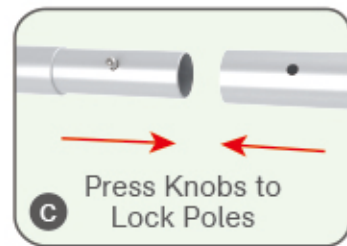
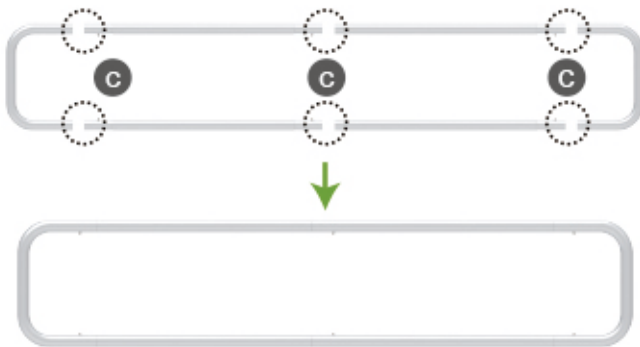
(1) Hardware



(2) Printed Graphic Fabric Banner (Optional)



STEP 01 Connect poles according to labelings.

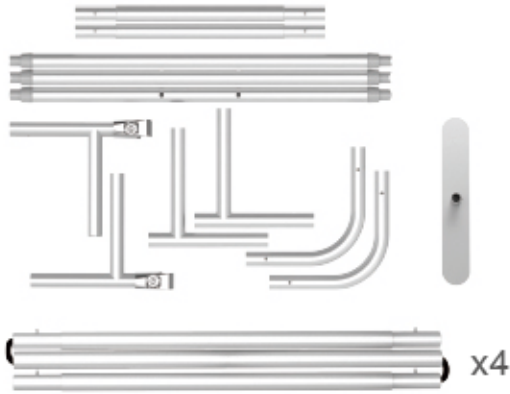


STEP 02 Slide fabric banner on frame from left and zip up at right.



STEPS

(1) Hardware

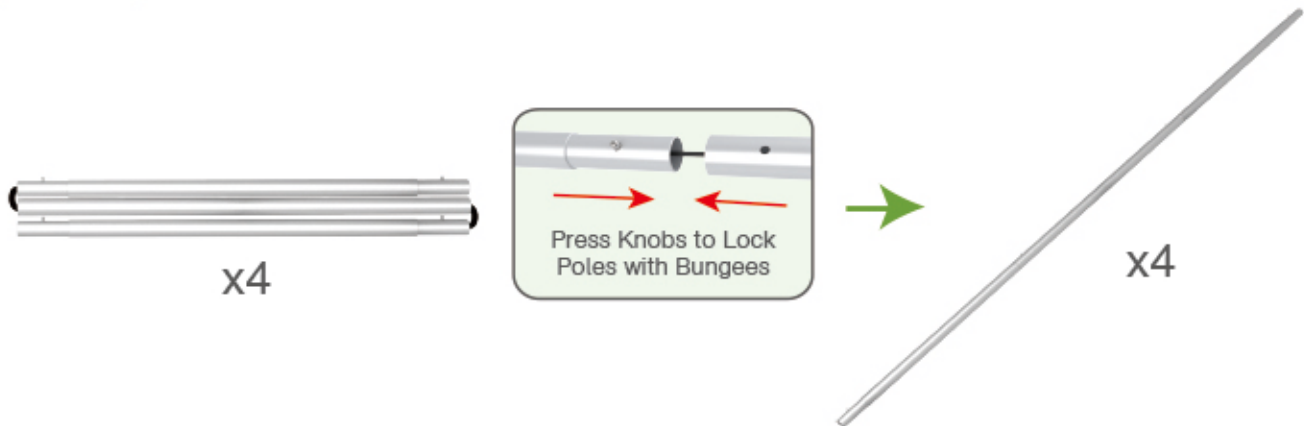


(2) Printed Graphic Fabric Banner (Optional)



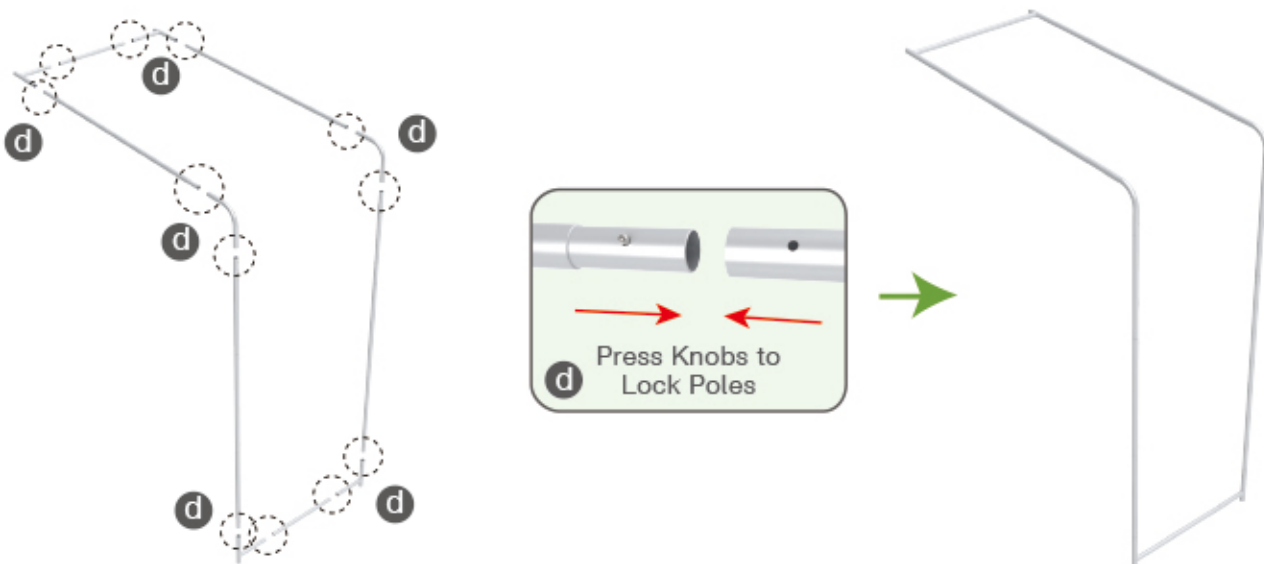
STEP 01

Connect to make long poles according to labelings.



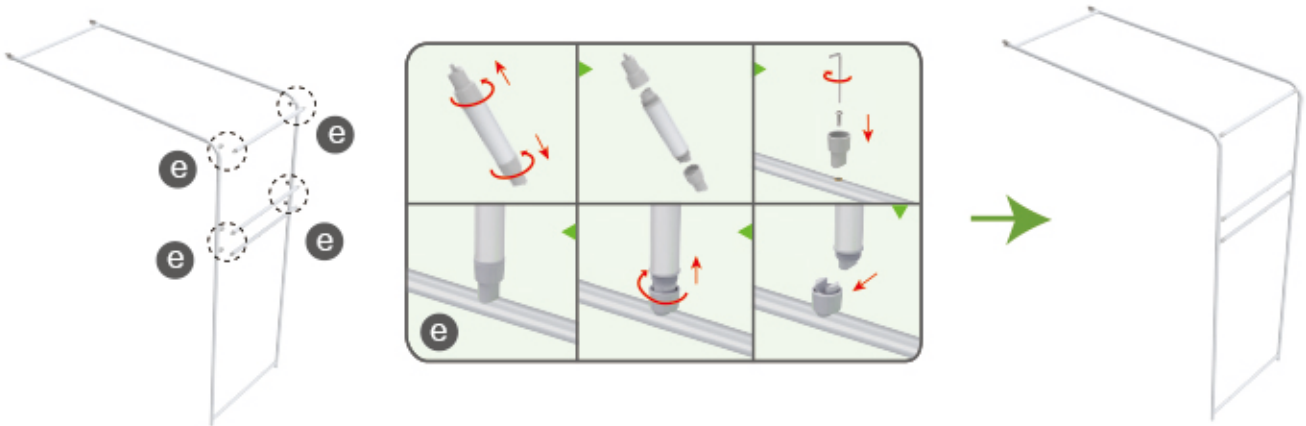
STEP 02

Connect long poles with corner poles according to labelings.

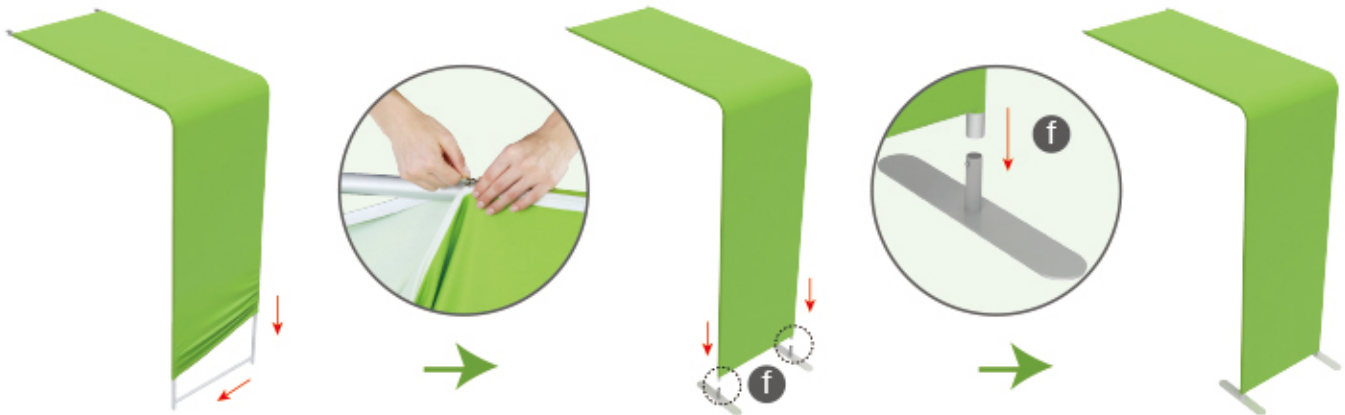


STEPS

STEP 03 Connect support poles onto frame.



STEP 04 Slide fabric banner on frame from top and zip up at bottom, insert display stands onto feet by pressing their knobs.



Booth Set Assembly



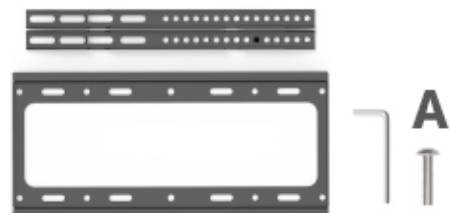
(1) 180° C-Shaped Clip



(2) Arm Clip

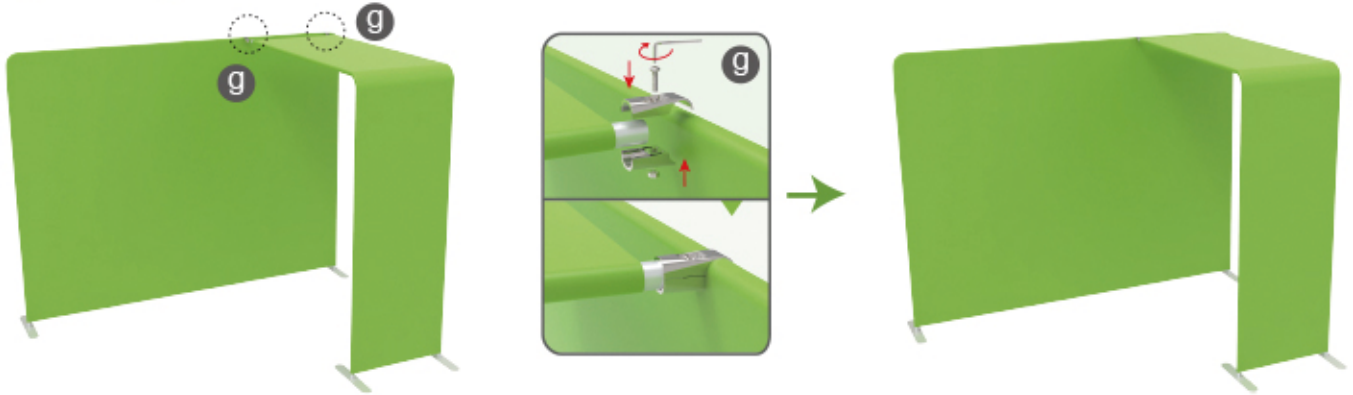


(3) TV Mount & Screw

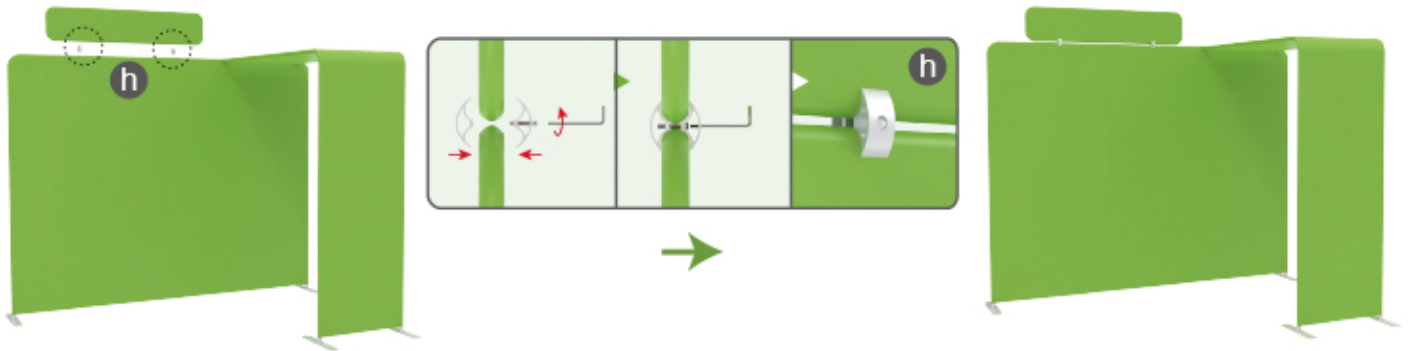


STEPS

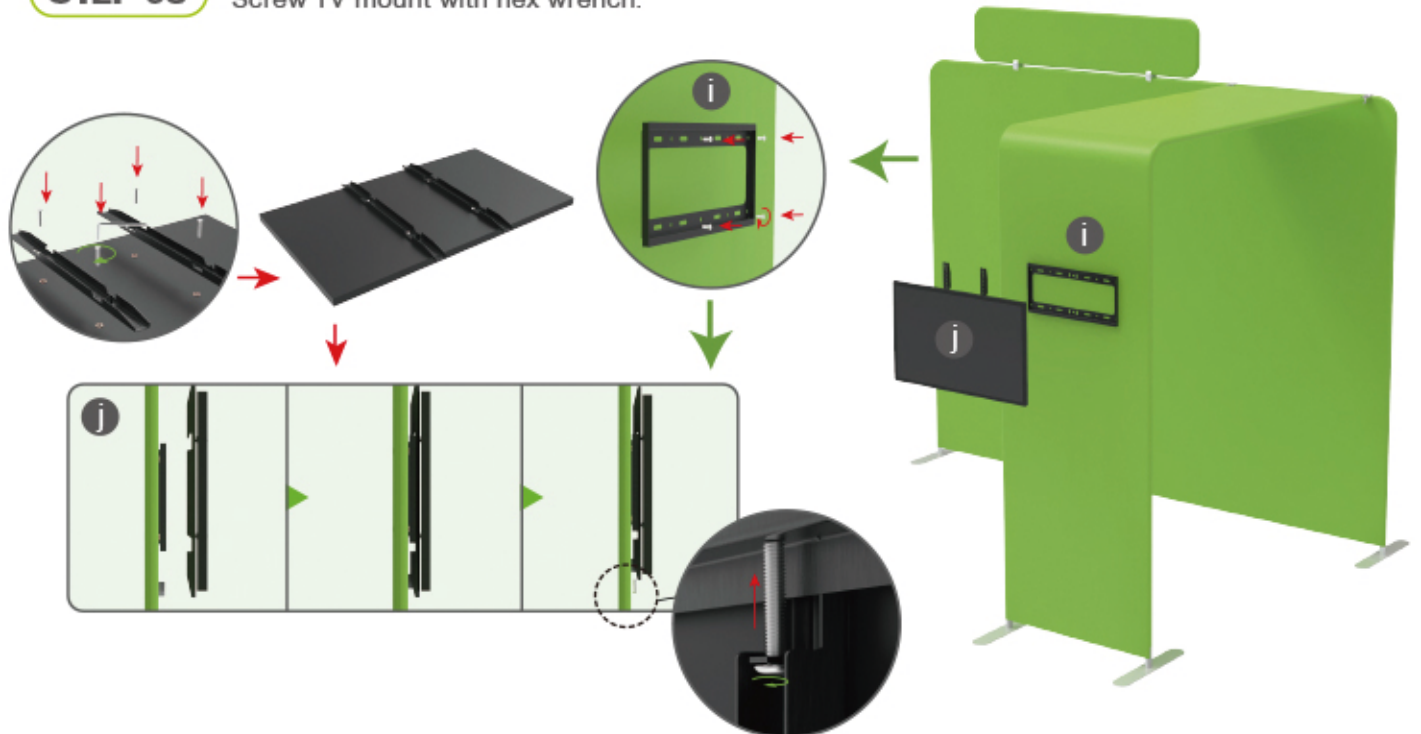
STEP 01 Connect display stands with arm clips.



STEP 02 Interconnect display stands with C-shaped clips.



STEP 03 Screw TV mount with hex wrench.



STEPS



10X10FT-BOOTH-M

STEPS

(1) Durable Plastic Hard Case, Aluminum Support Poles



(2) Printed Graphic Fabric Banner



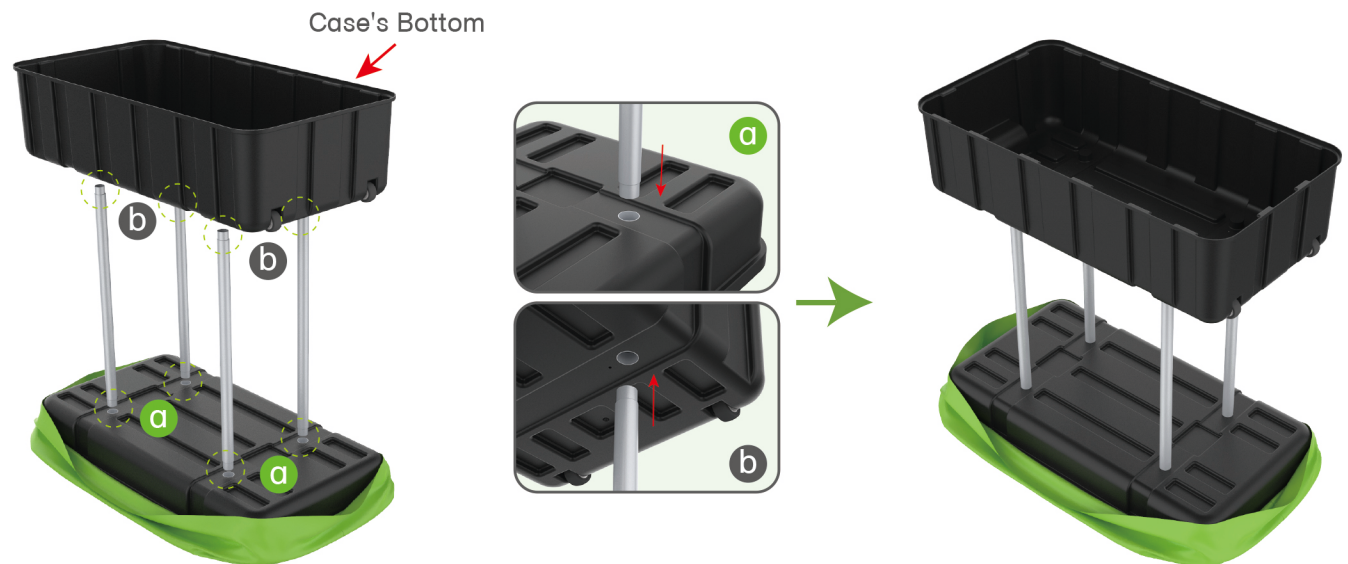
STEP 01

Put hard case's top into fabric banner.



STEP 02

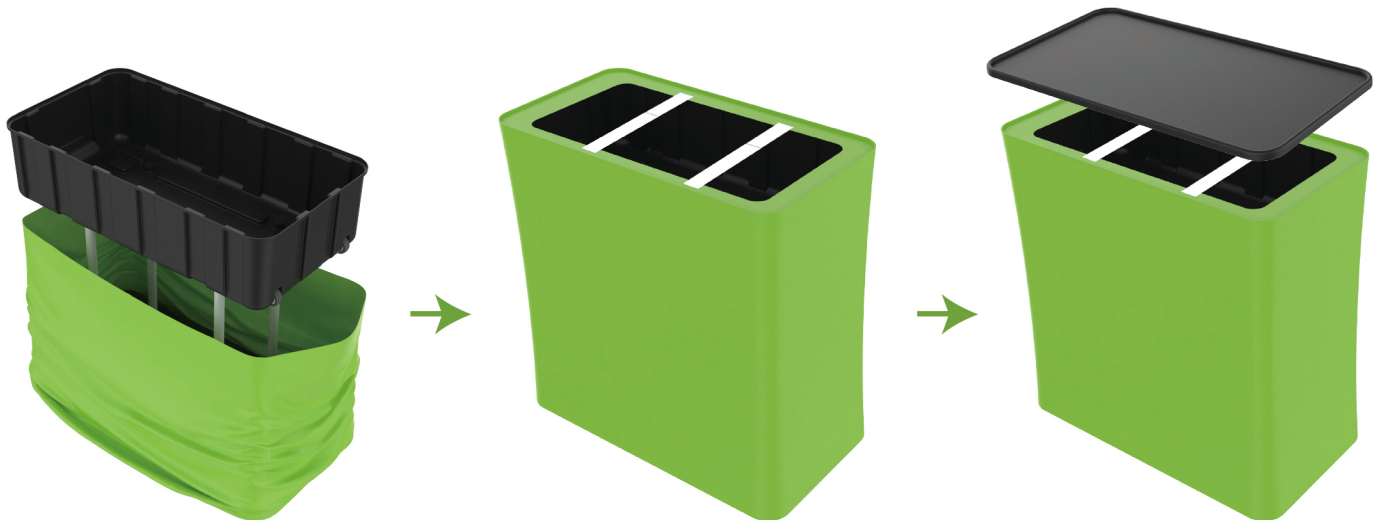
Insert support poles into hard case's top & bottom.



STEPS

STEP 04

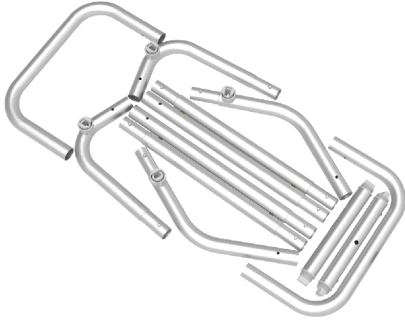
Wrap fabric banner from bottom to top & twist it to be smooth, lay hard case's intermediate panel on podium's top.



★ One Tool (Hex Wrench) 

STEPS

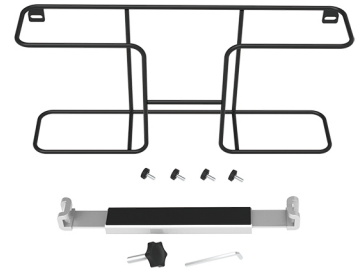
(1) Snap Tubes



(2) Printed fabric banner

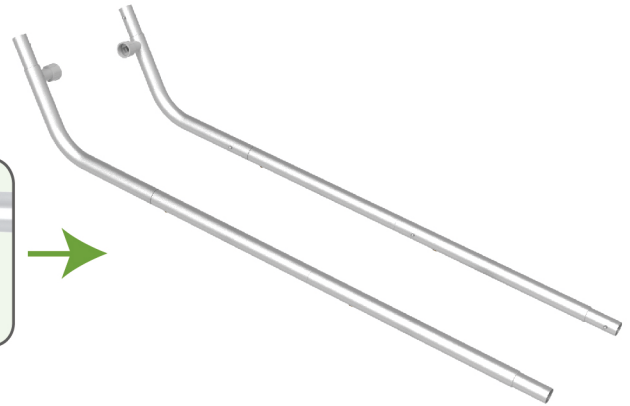
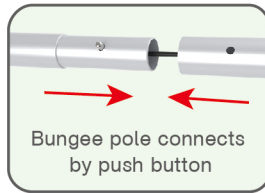


(3) Brochure rack x 2 / Screws x 4
Tablet PC holder x1



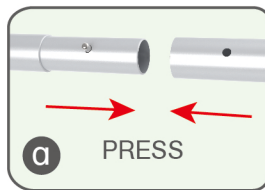
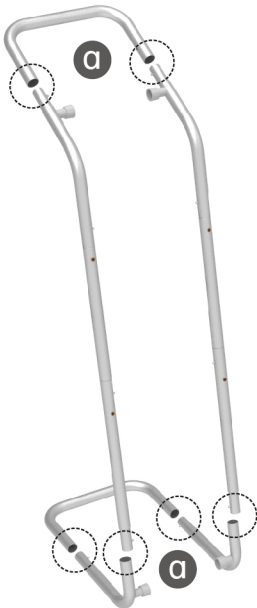
STEP 01

To Connect the tubes according to the labellings



STEP 02

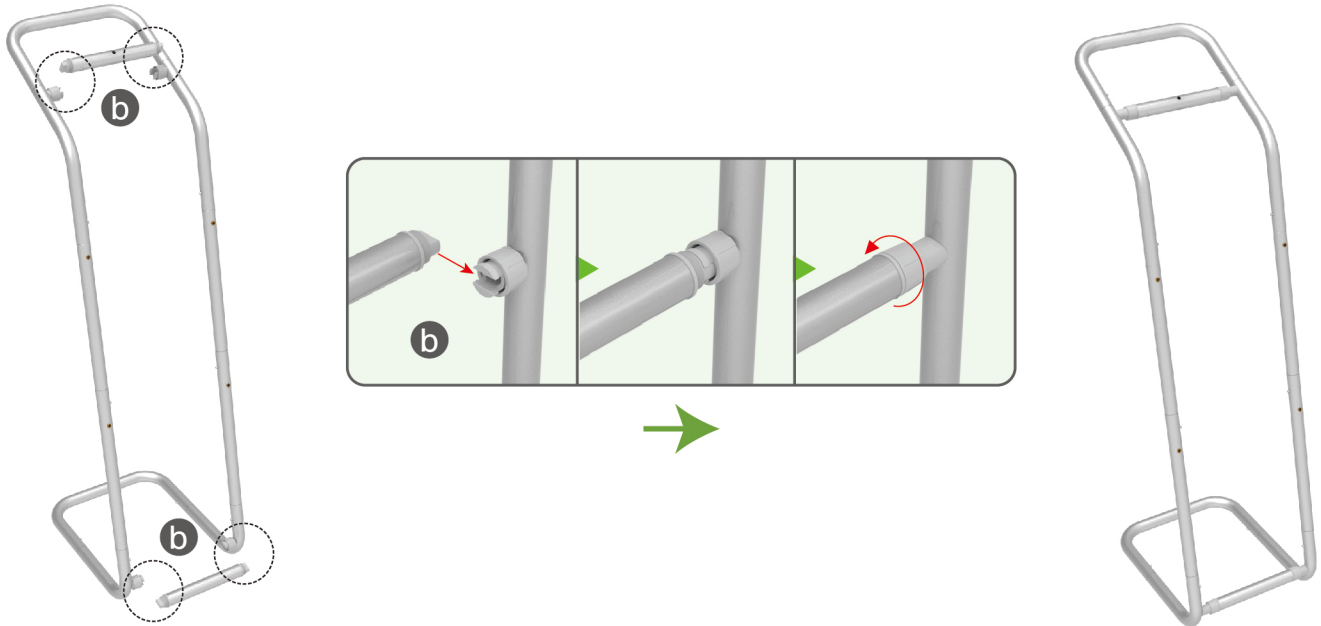
To connect 2 long side tubes by the corner pieces



STEPS

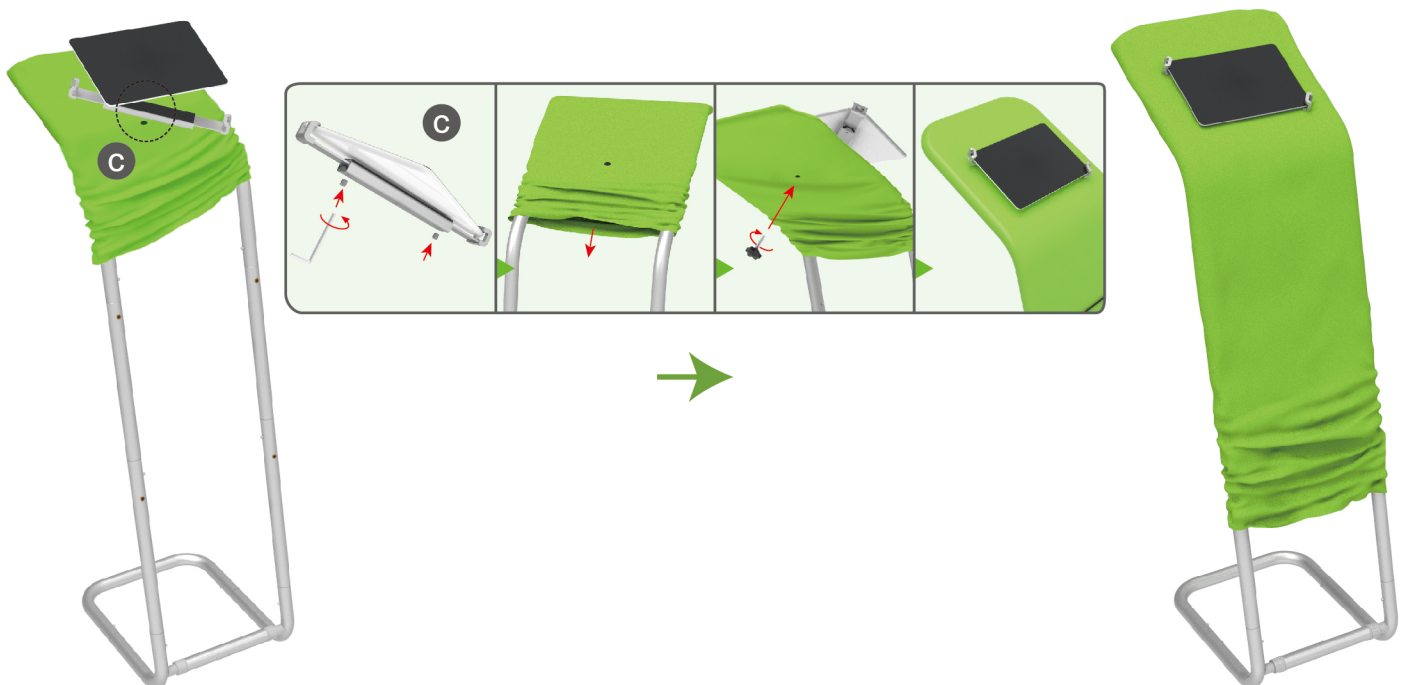
STEP 03

To install the cross bar according to labellings



STEP 04

To wrap the fabric from top to the middle of frame, then put the iPad in the holder and adjust the holder to right size and lock it by Allen Key Afterwards, install the set to the display stand.



STEPS

STEP 05

To pull the fabric banner to bottom and zip up.



STEP 06

To Install 2 racks by screws in position

