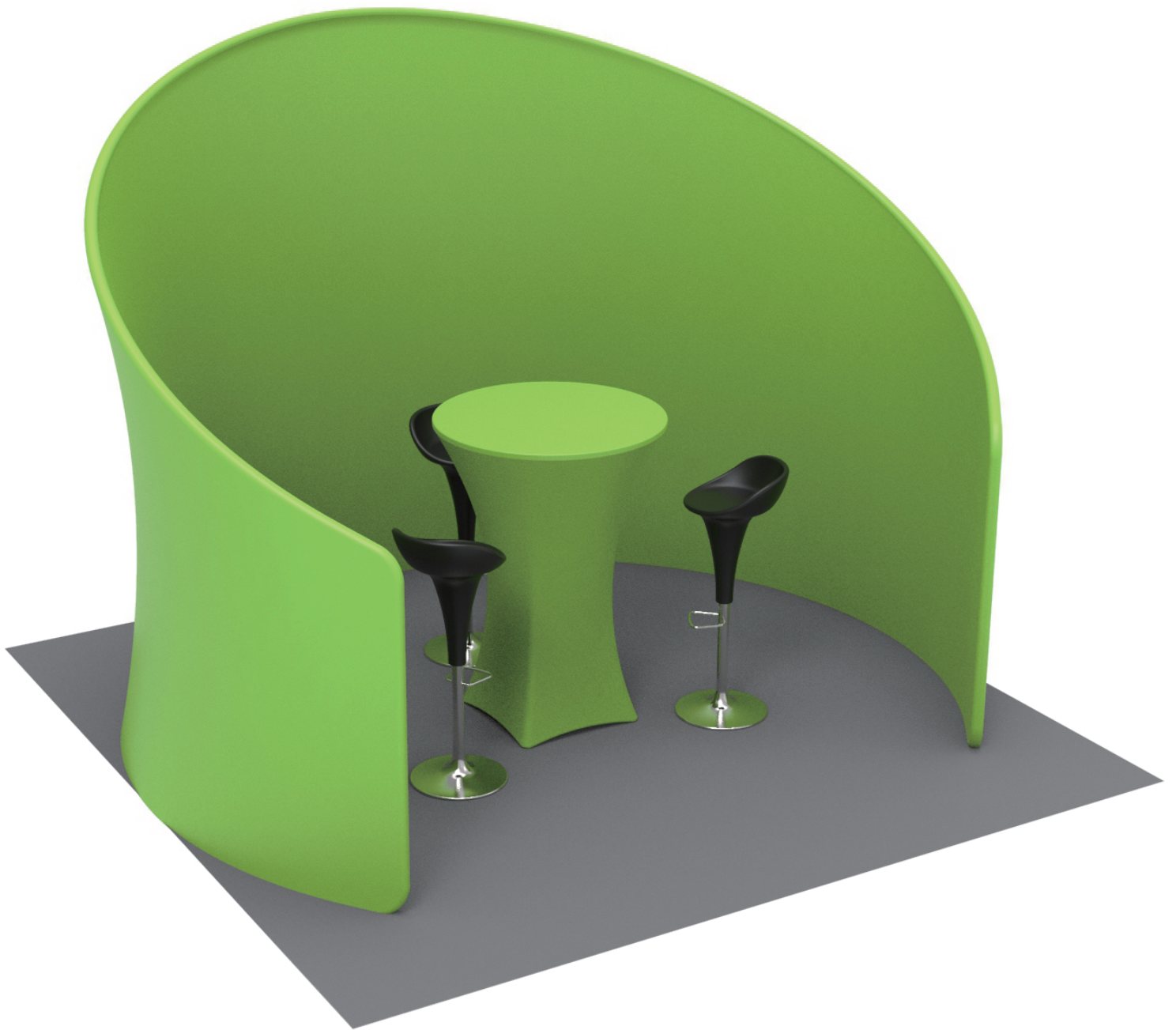


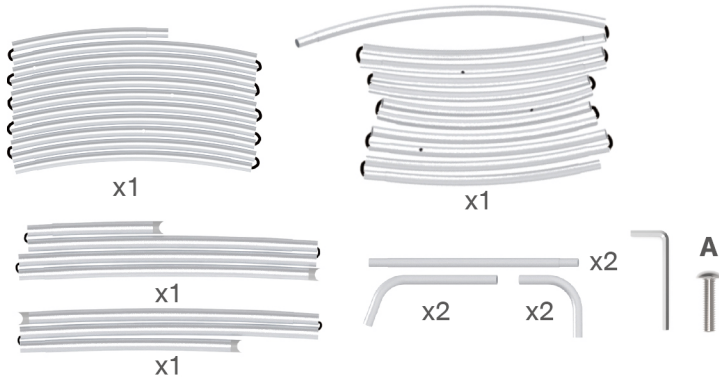
# INSTRUCTION



**10X10FT-BOOTH-K**

## STEPS

### (1) Hardware

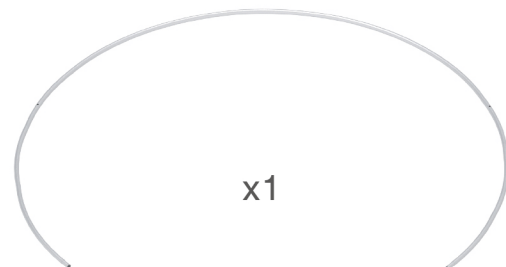
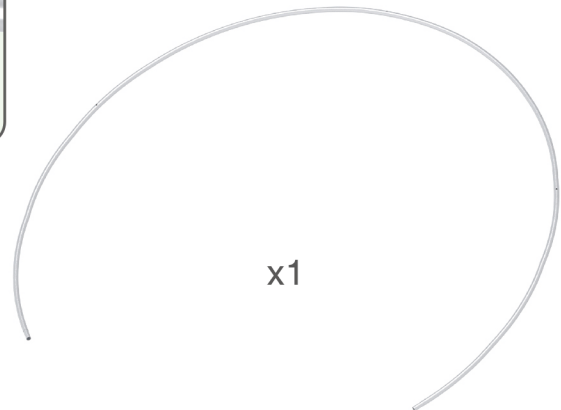
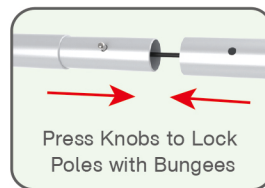


### (2) Printed Graphic Fabric Banner (Optional)



### STEP 01

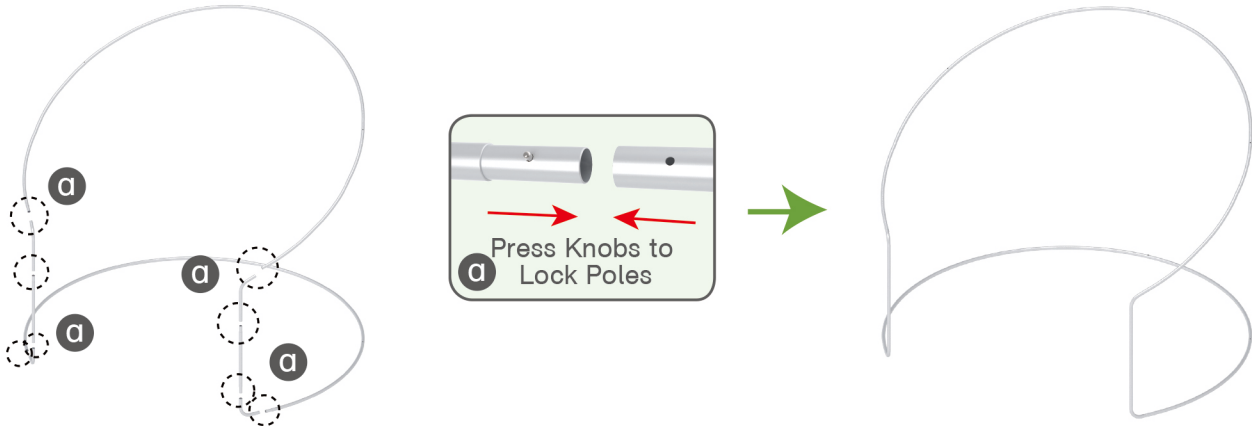
Connect to make long poles according to labelings.



## STEPS

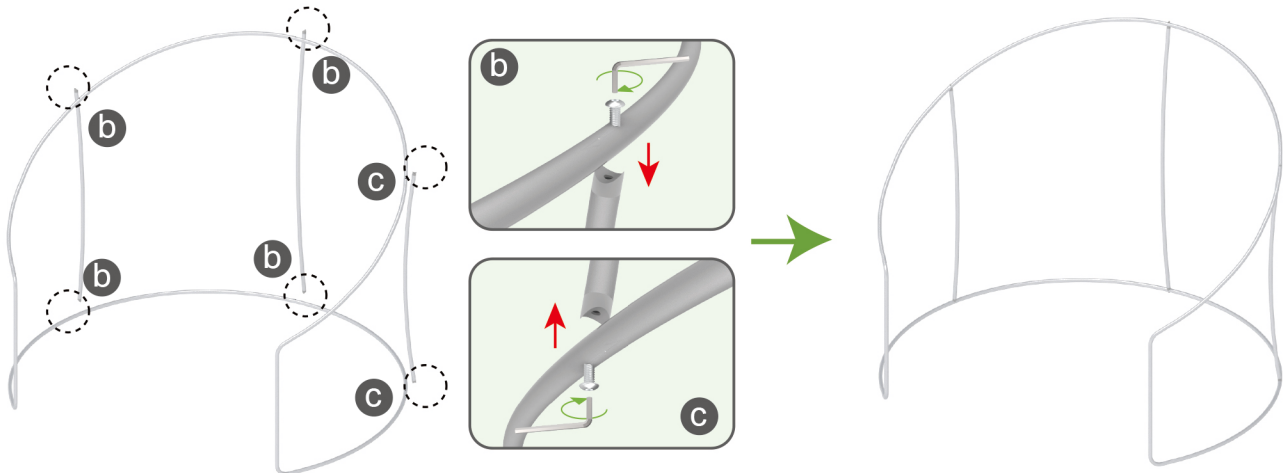
### STEP 02

Connect long poles with corner poles according to labelings.



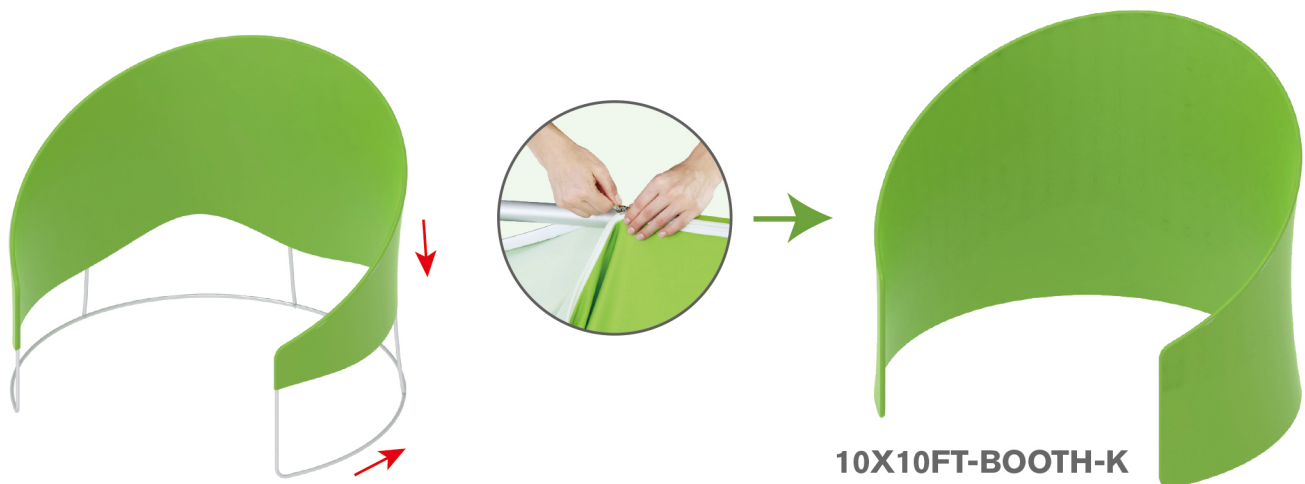
### STEP 03

Connect support poles onto frame.



### STEP 04

Wrap enclosure frame with fabric banner & zip up at bottom.

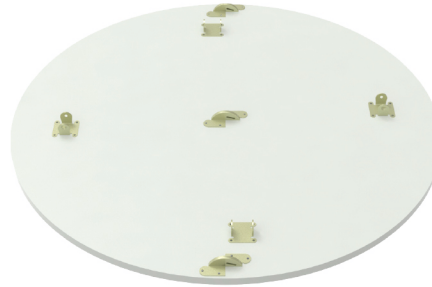


## STEPS

### (1) Hardware



### (2) Countertop Panel



### (3) Fixing Accessory

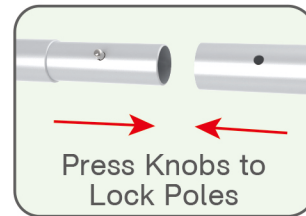


### (4) Printed Graphic Fabric Banner



#### STEP 01

Connect to make long poles according to labelings.



#### STEP 02

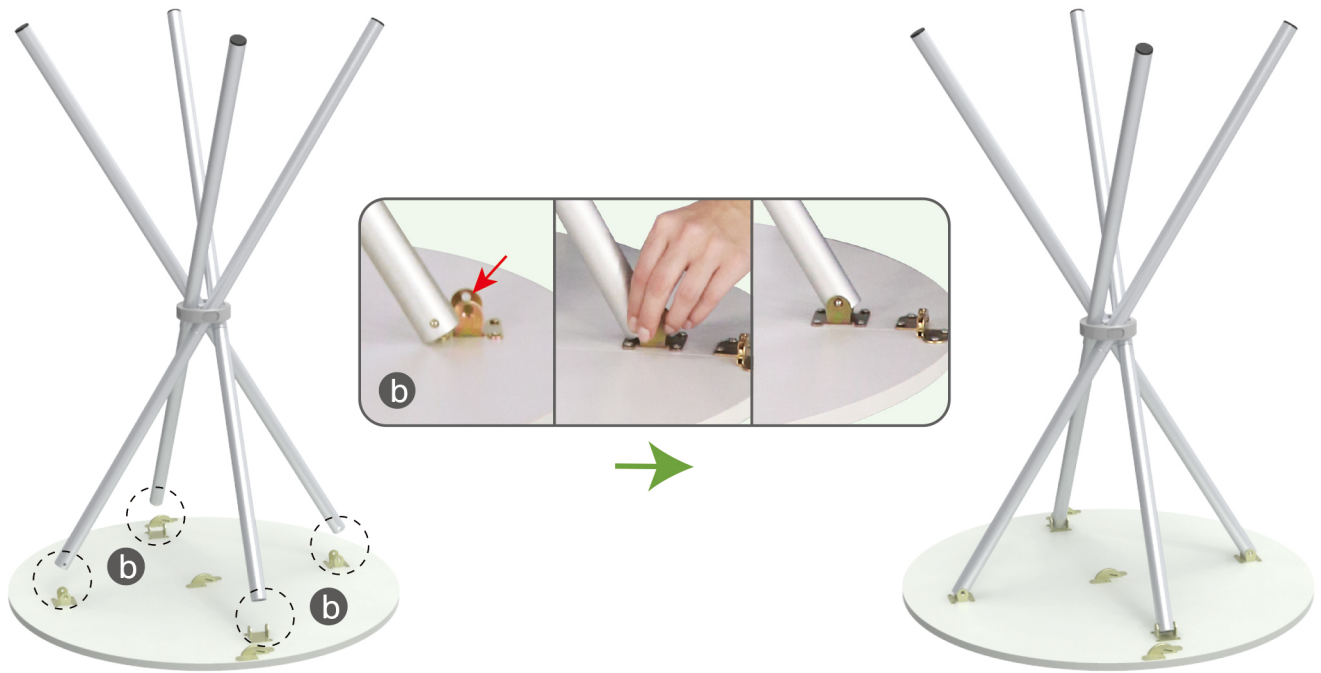
Insert poles into fixing accessory until you hear a 'Ding' sound to make poles' knobs clip into it & its concave parts pop out.





## STEPS

**STEP 03** Press poles' knobs to clip into countertop's slot.



**STEP 04**

Wrap fabric banner from top to bottom, put poles into pockets & zip up.

