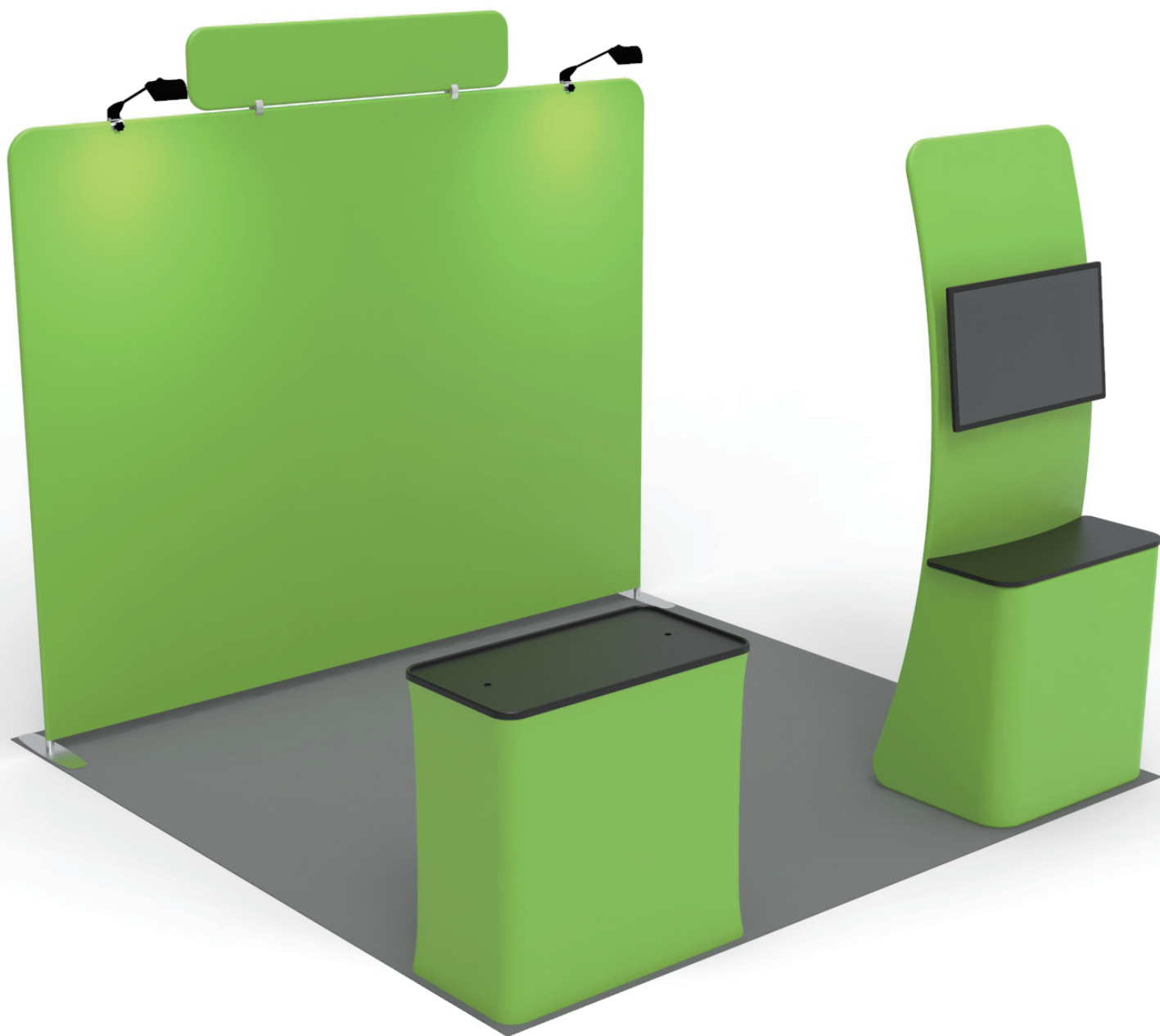


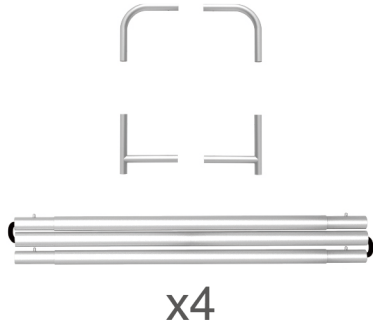
INSTRUCTION



TF-SB-10X10-27

STEPS

(1) Hardware

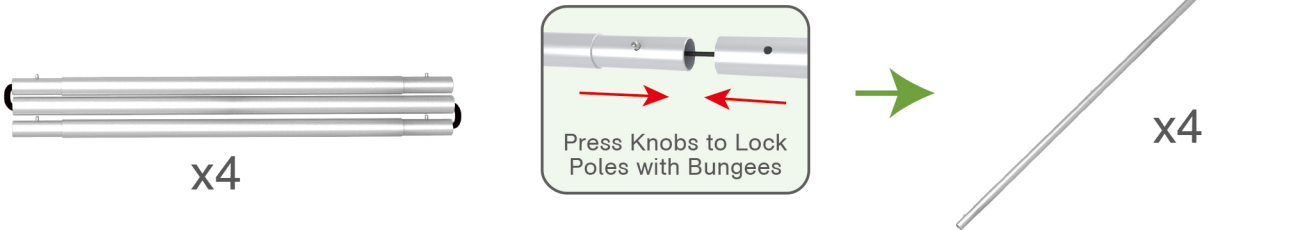


(2) Printed Graphic Fabric Banner (Optional)



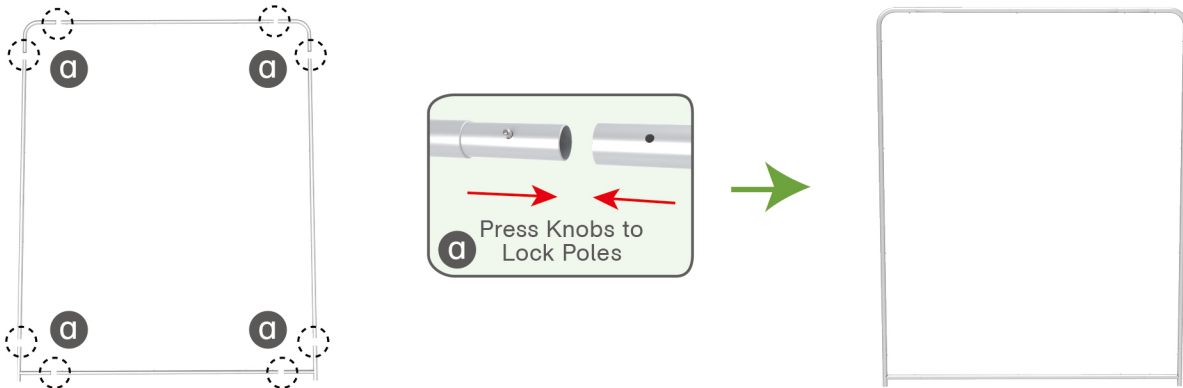
STEP 01

Connect to make long poles according to labelings.



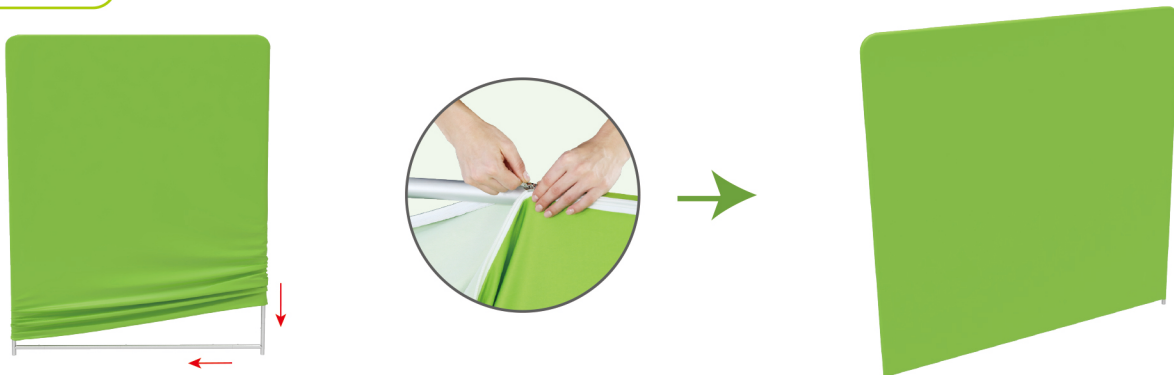
STEP 02

Connect long poles with corner poles according to labelings.



STEP 03

Slide fabric banner on frame from top and zip up at bottom.



STEPS

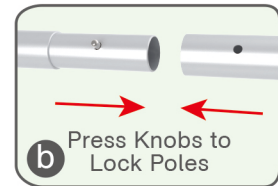
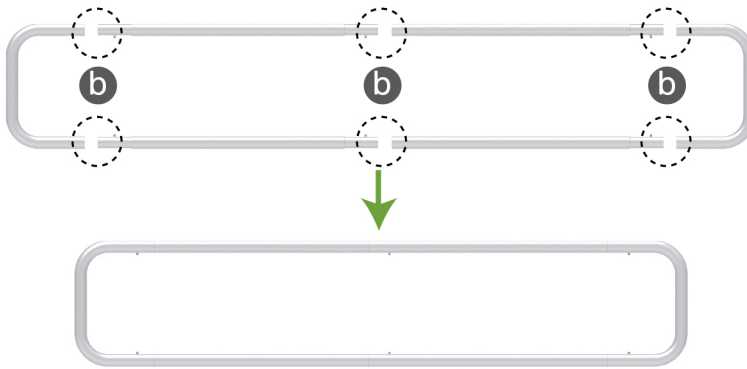
(1) Hardware



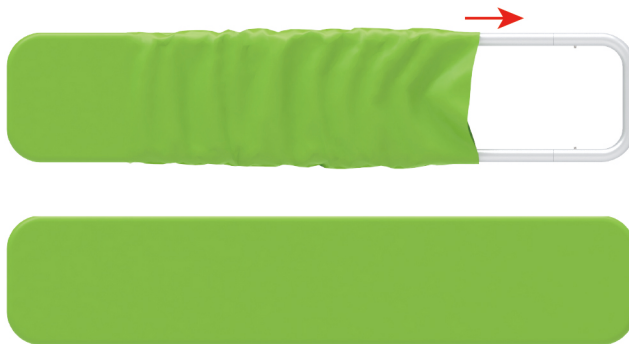
(2) Printed Graphic Fabric Banner (Optional)



STEP 01 Connect poles according to labelings.



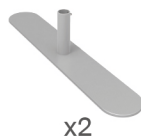
STEP 02 Slide fabric banner on frame from left and zip up at right.



Booth Set Assembly



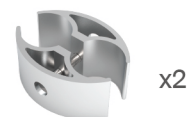
(1) Base



(2) LED Light & Clip



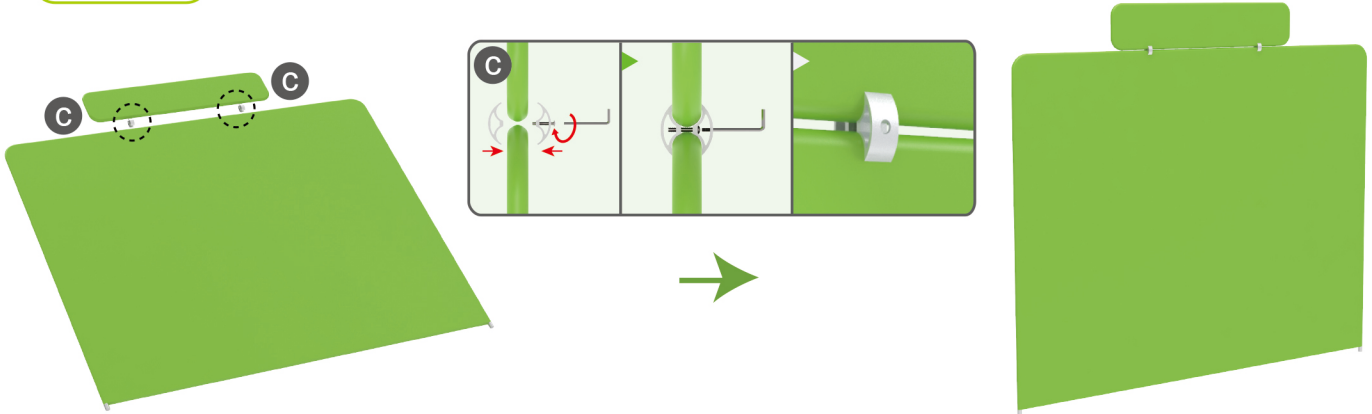
(3) 180° C-Shaped Clip



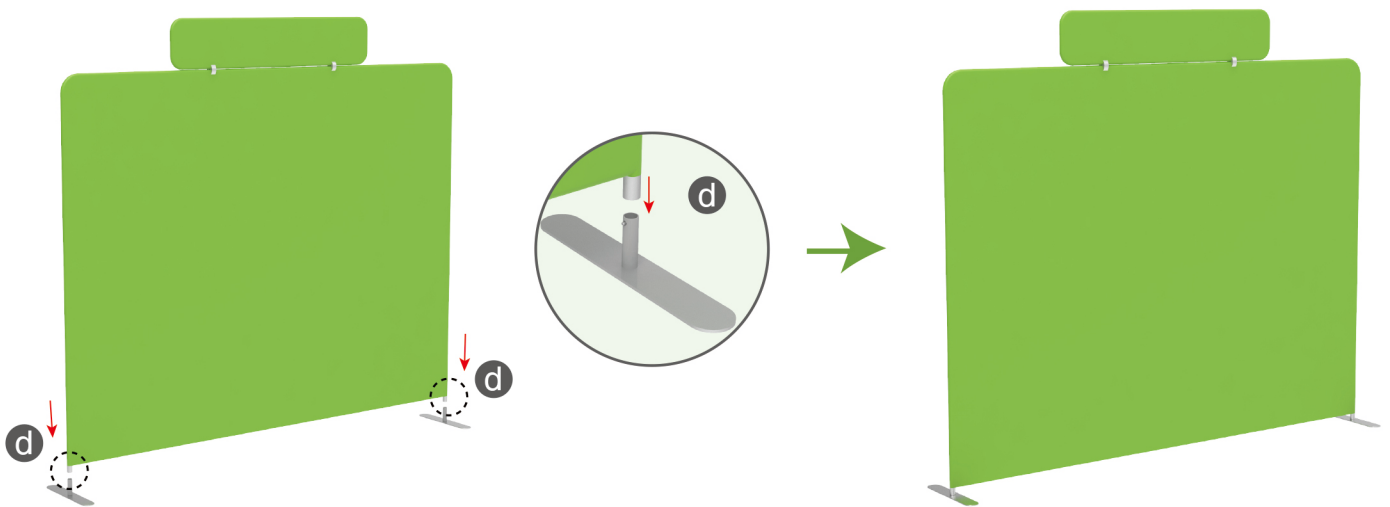
★ One Tool (Hex Wrench) 

STEPS

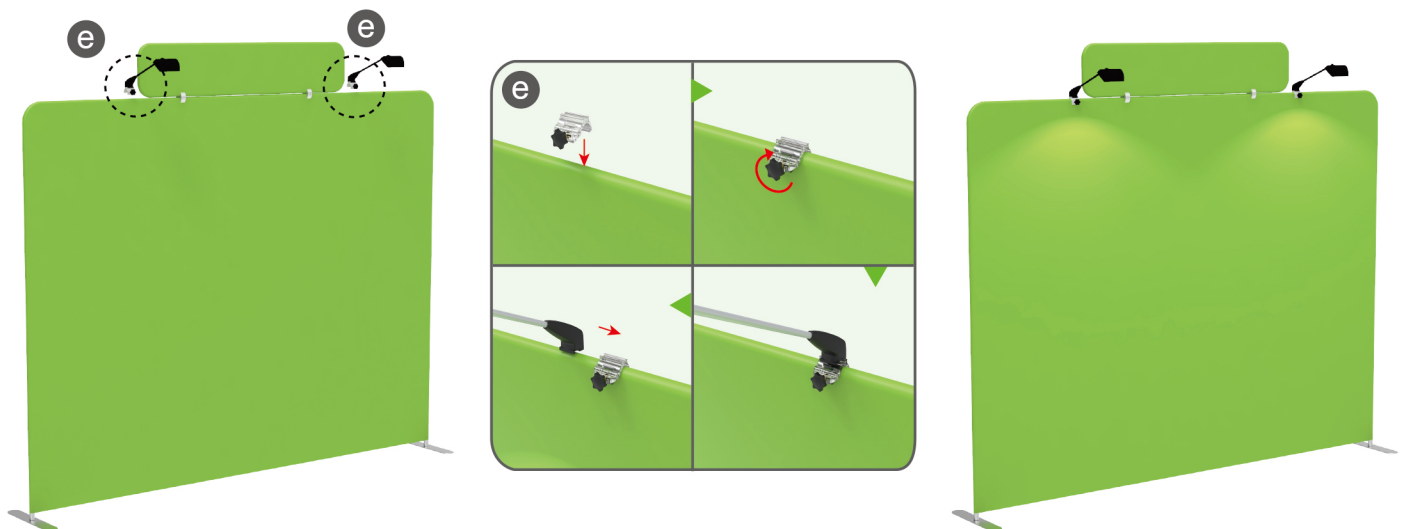
STEP 01 Interconnect display stands with C-shaped clips.



STEP 02 Insert display stands onto feet by pressing their knobs.



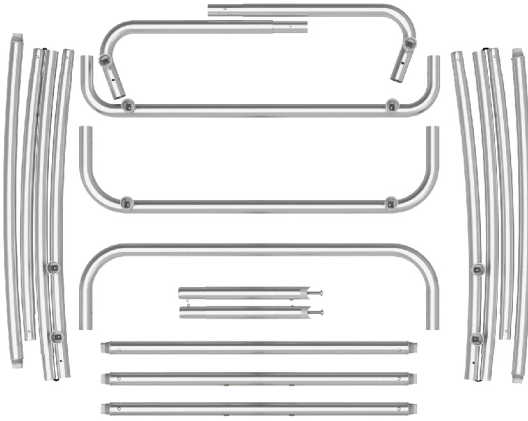
STEP 03 Screw light clips at top of display stands, slide lights onto them and adjust their direction.



★ One Tool (Hex Wrench) 

STEPS

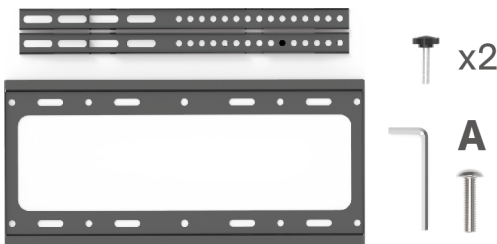
(1) Hardware



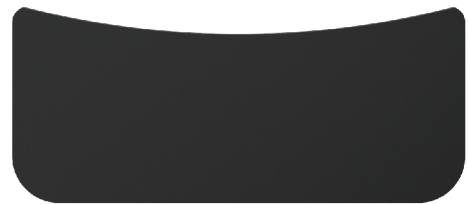
(2) Fabric banner



(3) TV mount & Screw bag

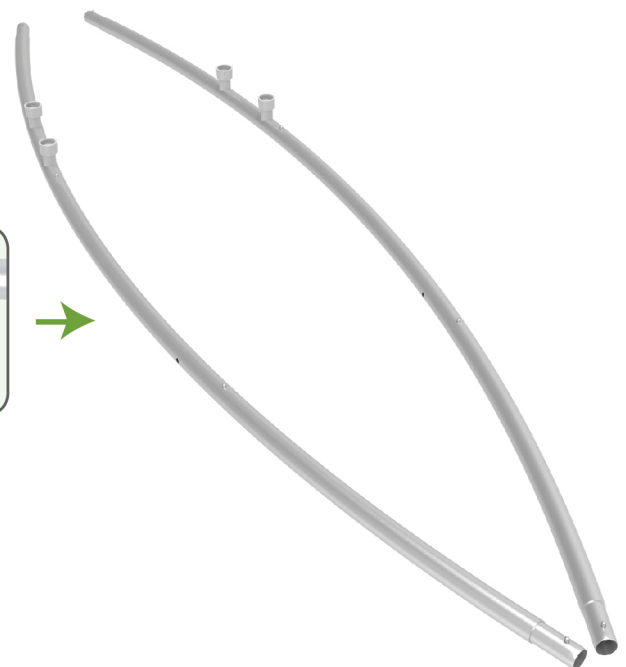
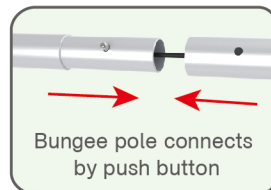


(4) Counter top



STEP 01

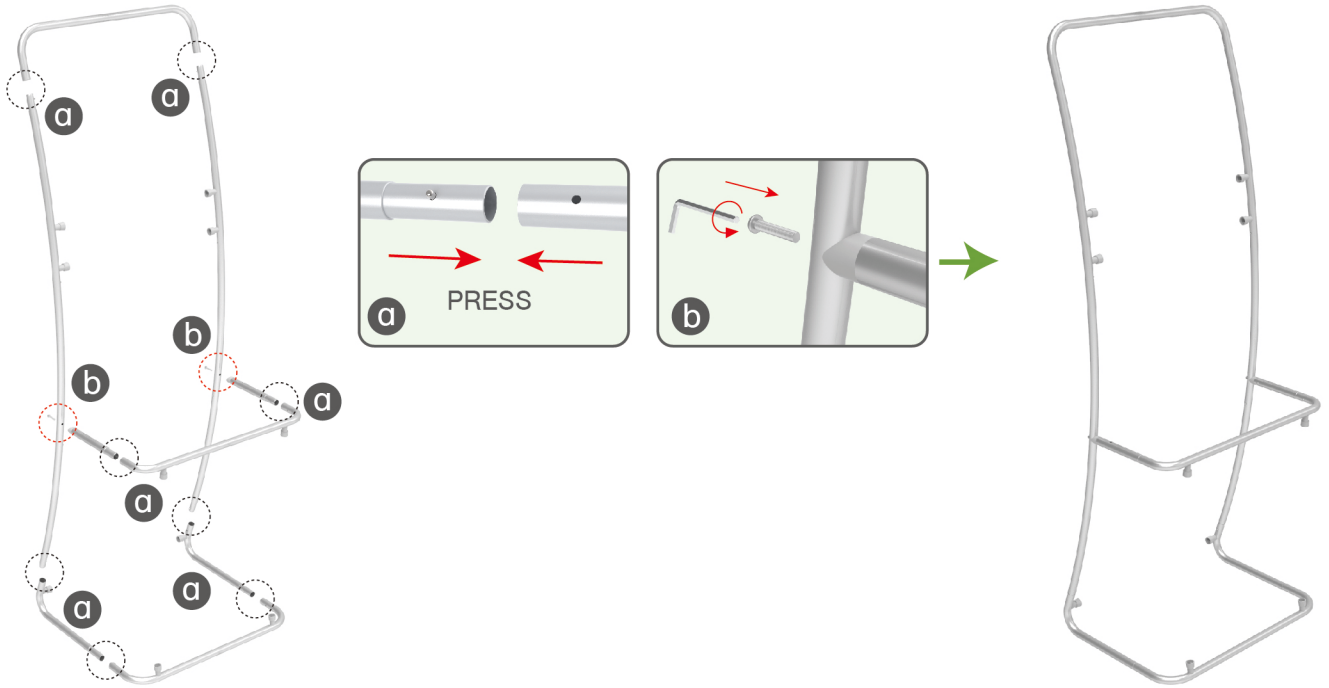
To connect the poles according to the labellings



STEPS

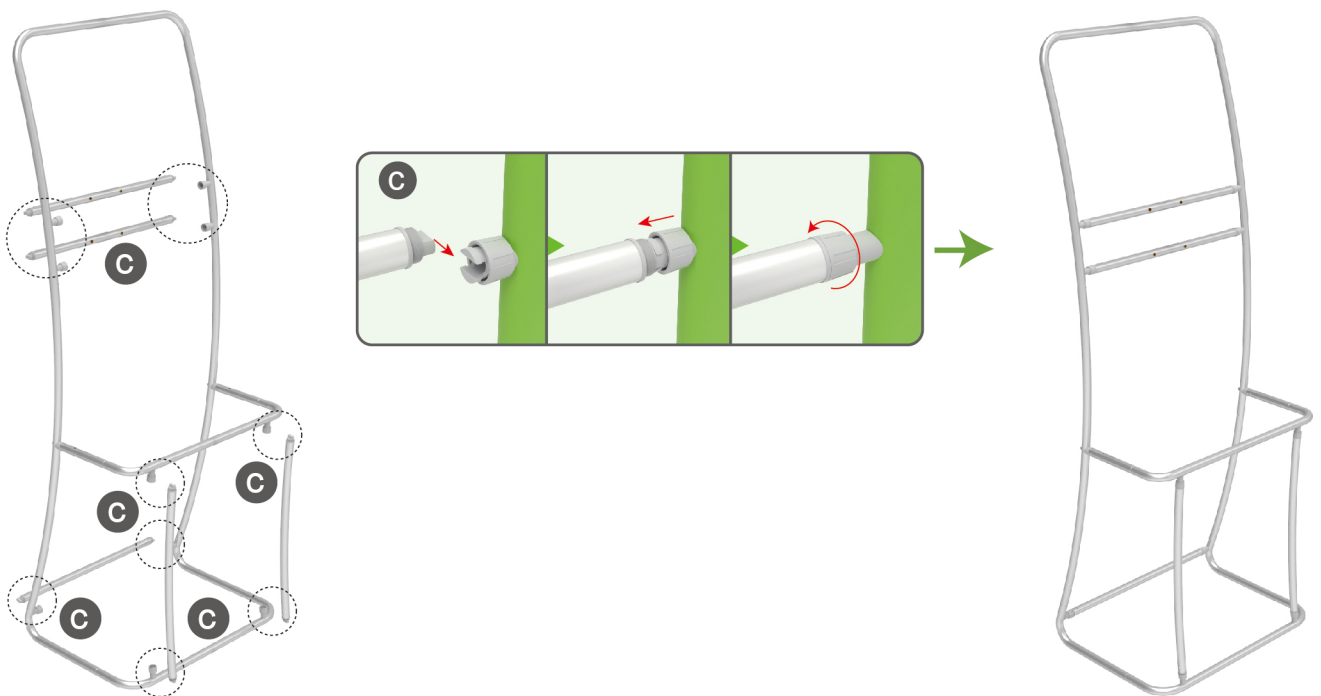
STEP 02

To connect the poles according to the labellings



STEP 03

To install the cross bar in position



STEPS

STEP 04

To wrap the fabric banner from top to bottom and zip up

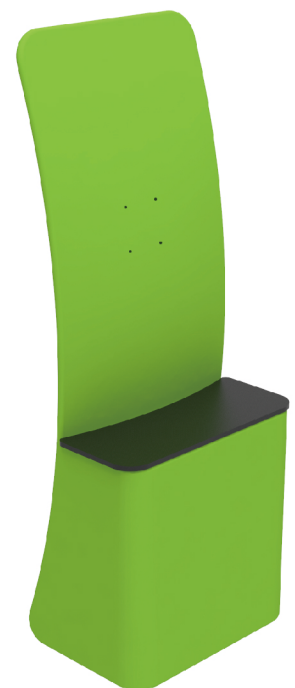
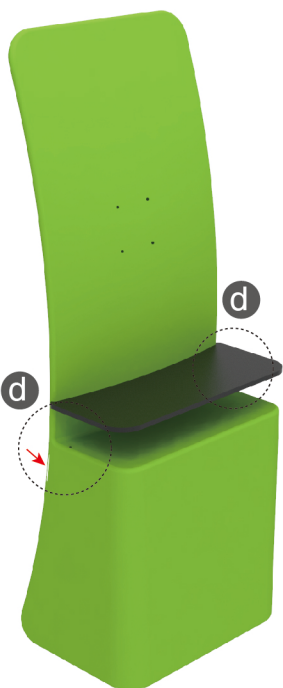


Zip up fabric graphic



STEP 05

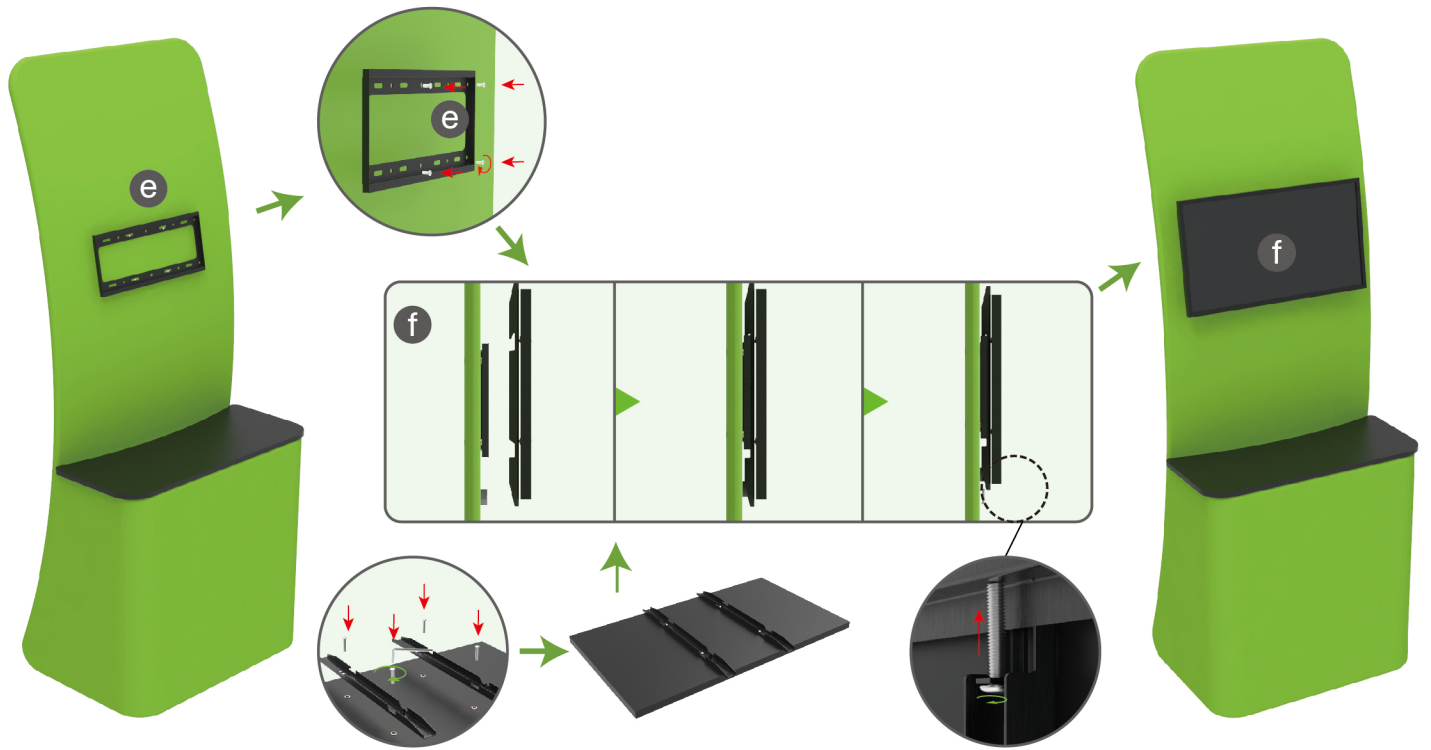
To put the counter top in position and unzip the zippers at 2 sides and use screw for fastening from bottom



STEPS

STEP 06

To install the TV mount



STEPS

(1) Durable Plastic Hard Case, Aluminum Support Poles

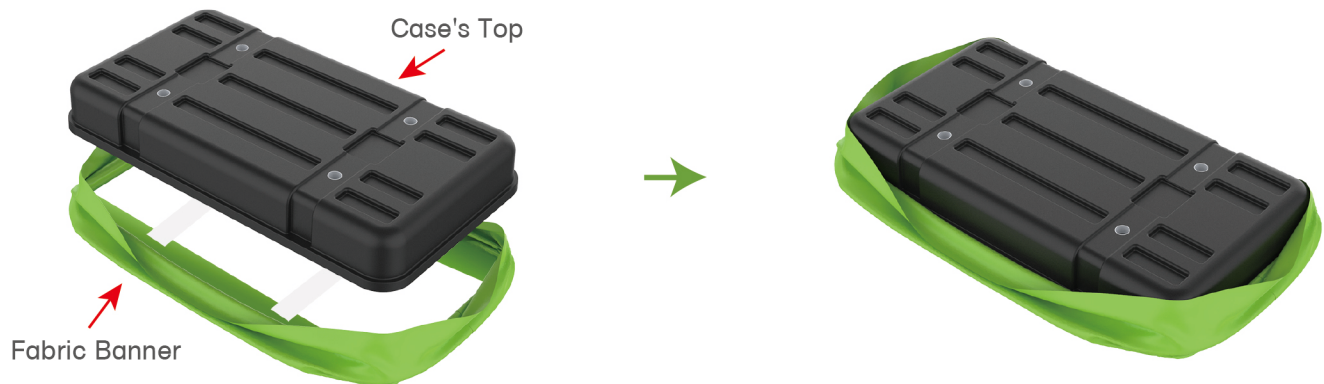


(2) Printed Graphic Fabric Banner



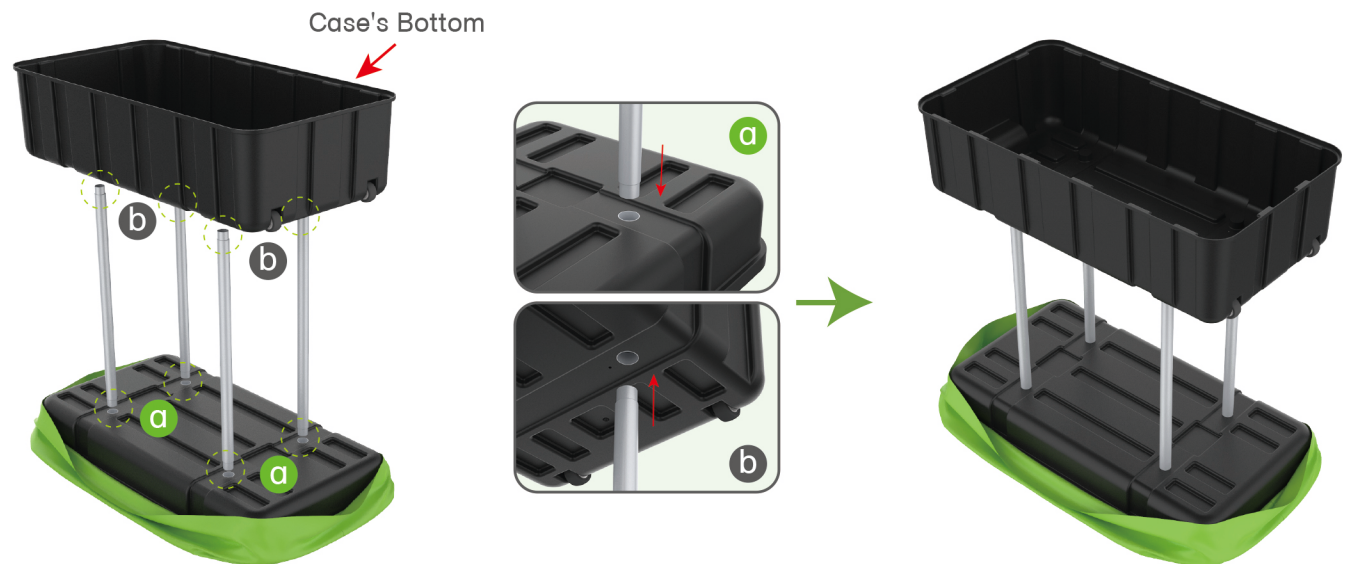
STEP 01

Put hard case's top into fabric banner.



STEP 02

Insert support poles into hard case's top & bottom.



STEPS

STEP 04

Wrap fabric banner from bottom to top & twist it to be smooth, lay hard case's intermediate panel on podium's top.

