

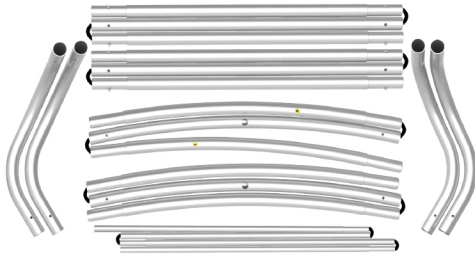
# INSTRUCTION



TF-SB-10X10-26

## STEPS

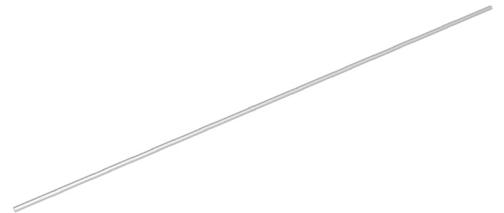
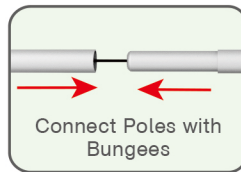
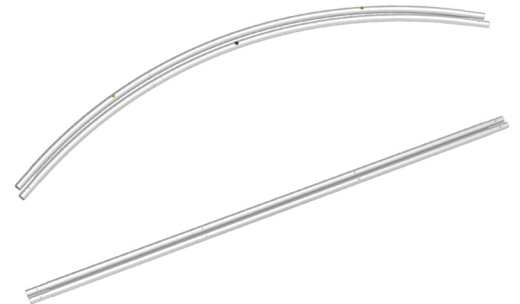
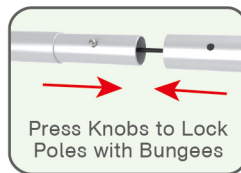
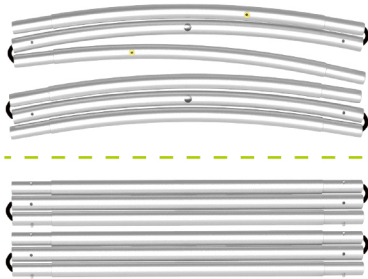
(1) Hardware



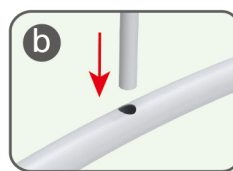
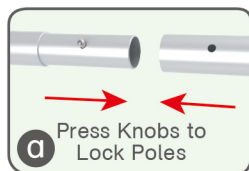
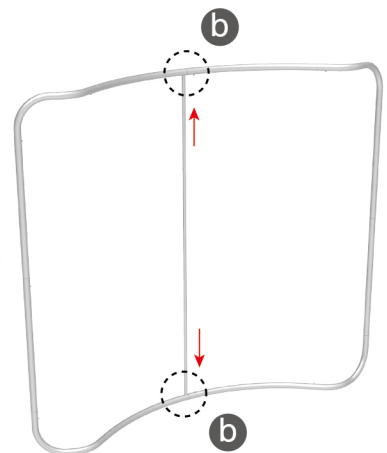
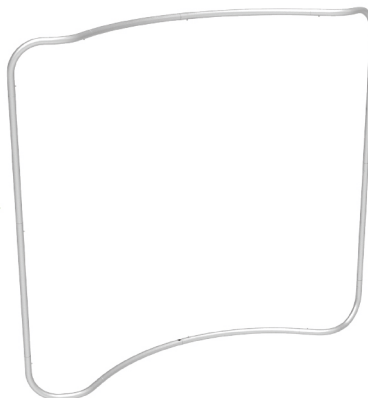
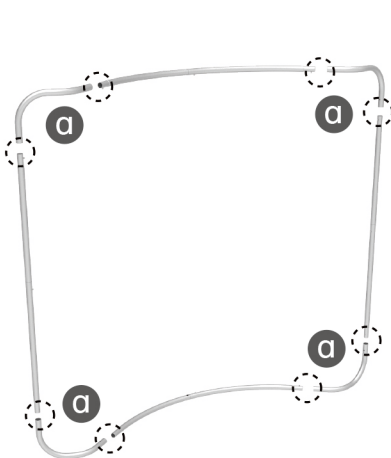
(2) Printed Graphic Fabric Banner (Optional)



**STEP 01** Connect to make long poles according to labelings.

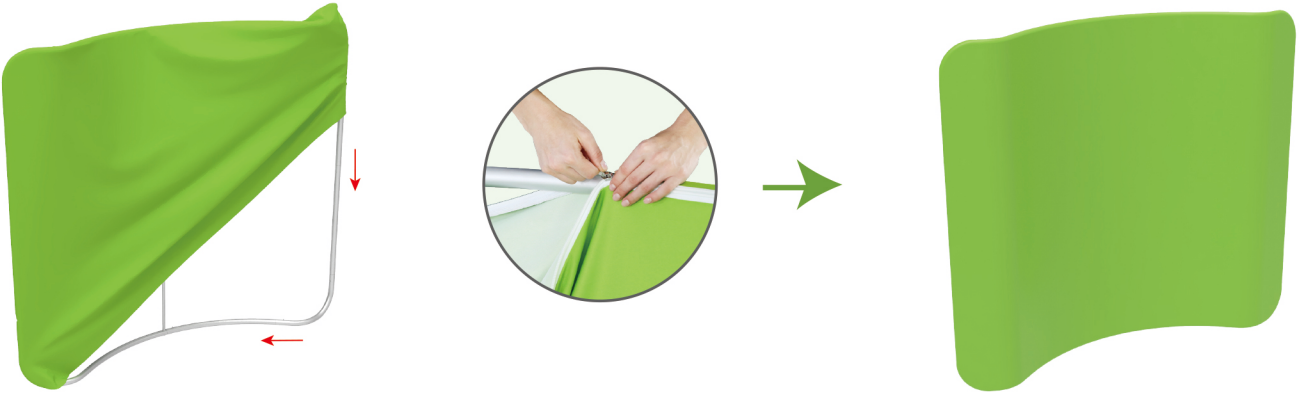


**STEP 02** Connect long poles with corner poles according to labelings.

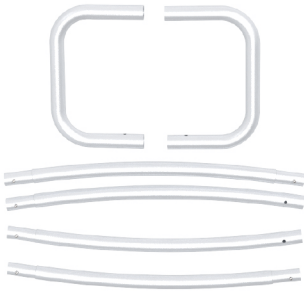


## STEPS

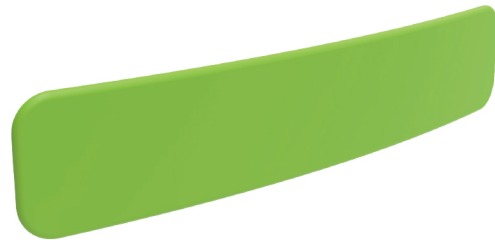
**STEP 03** Slide fabric banner on frame from top and zip up at bottom.



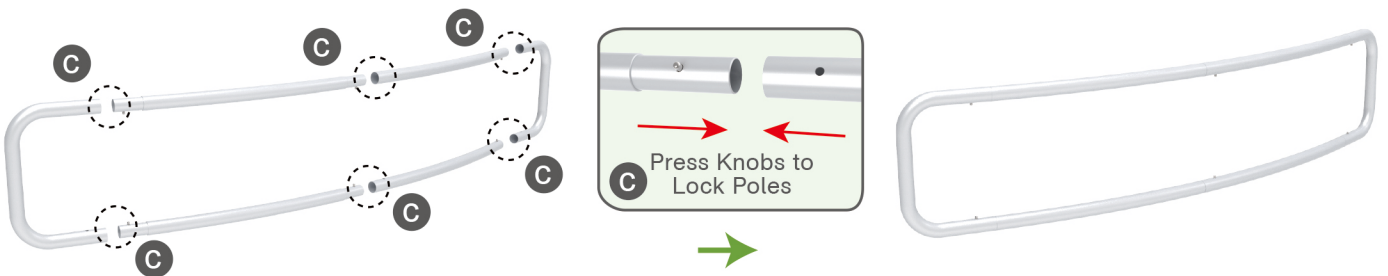
(1) Hardware



(2) Printed Graphic Fabric Banner (Optional)



**STEP 01** Connect poles according to labelings.



**STEP 02** Slide fabric banner on frame from left and zip up at right.



★ One Tool (Hex Wrench) 

**STEPS**

**Booth Set Assembly**



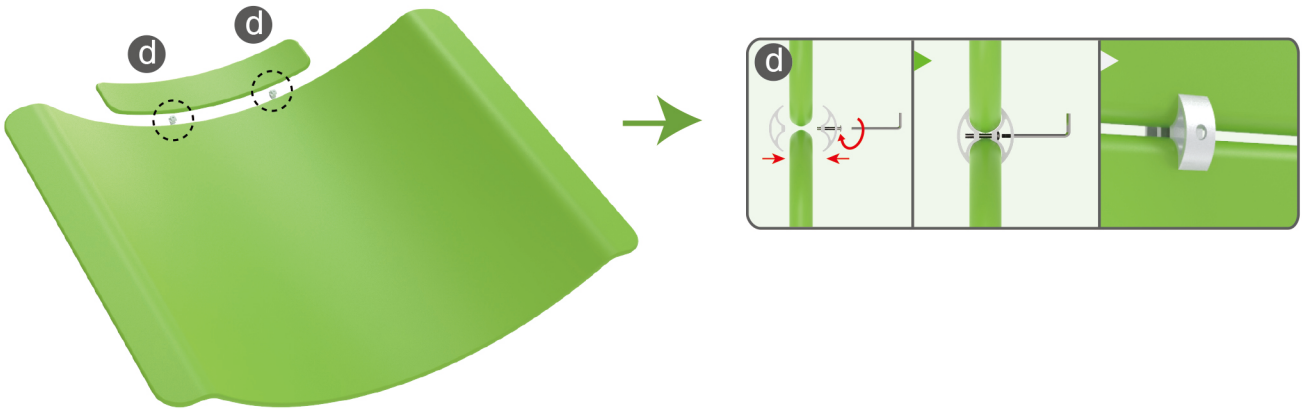
(1) LED Light & Clip



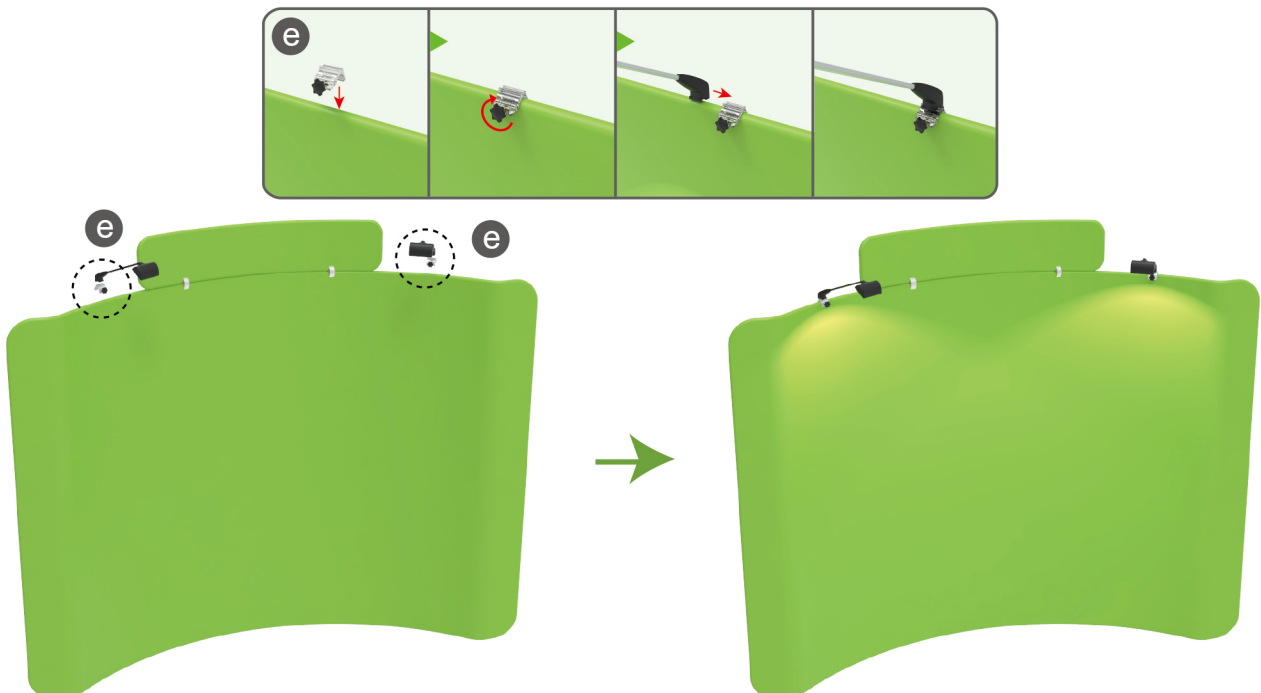
(2) 180° C-Shaped Clip



**STEP 01** Interconnect display stands with C-shaped clips.



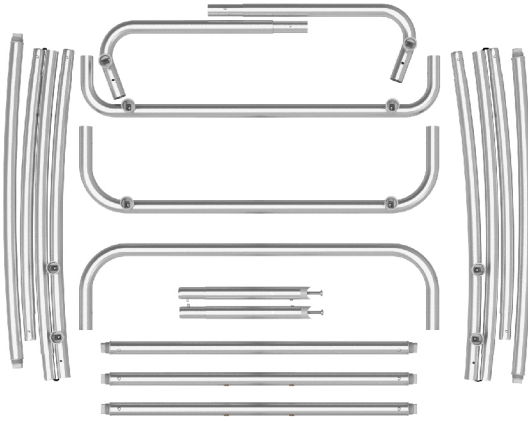
**STEP 05** Screw light clips at top of display stands, slide lights onto them and adjust their direction.



★ One Tool (Hex Wrench) 

## STEPS

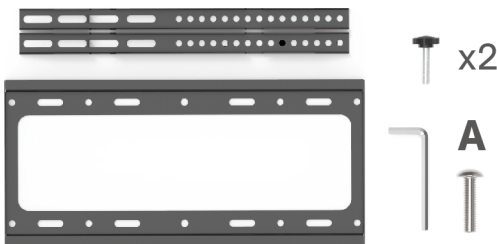
(1) Hardware



(2) Fabric banner



(3) TV mount & Screw bag

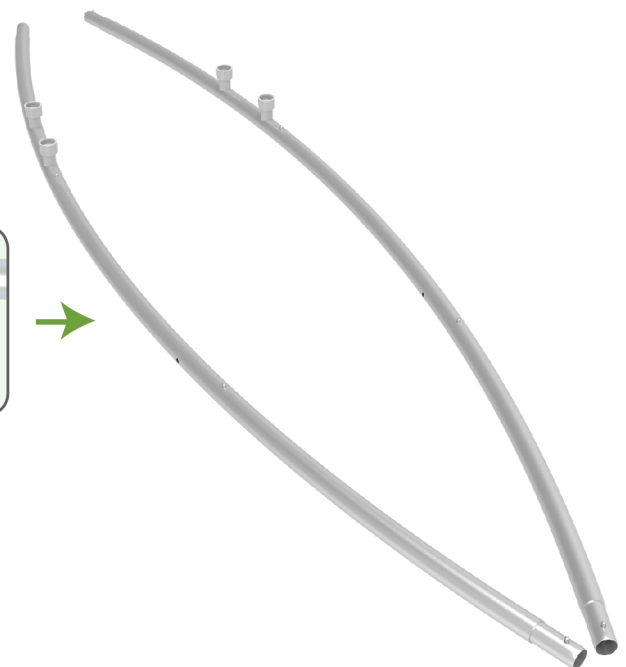
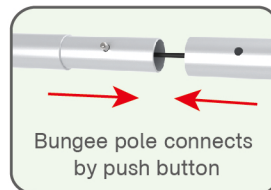


(4) Counter top



### STEP 01

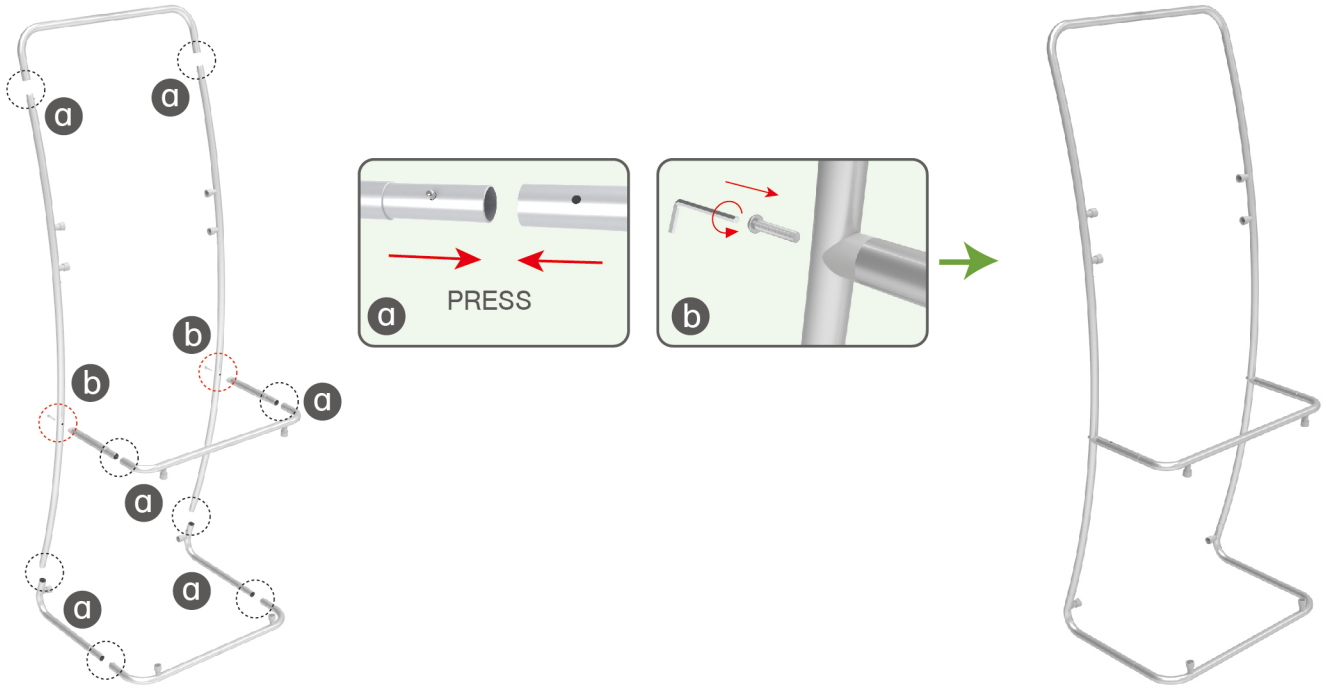
To connect the poles according to the labellings



## STEPS

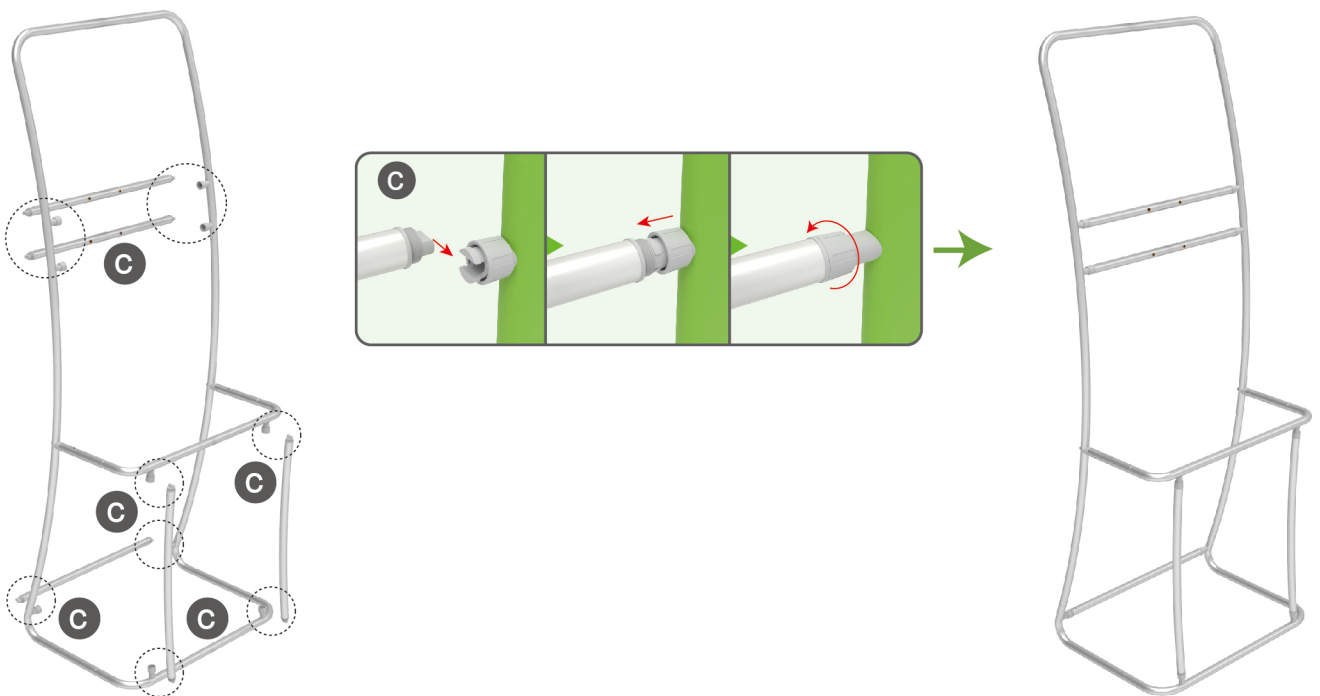
### STEP 02

To connect the poles according to the labellings



### STEP 03

To install the cross bar in position



## STEPS

### STEP 04

To wrap the fabric banner from top to bottom and zip up

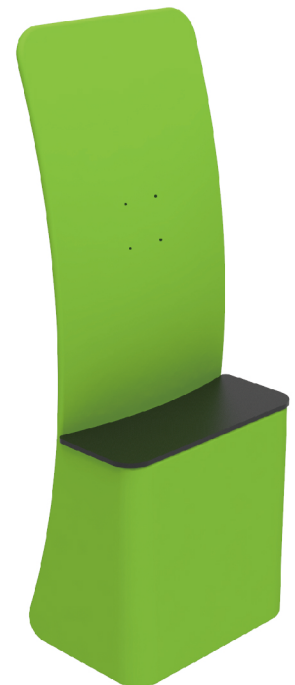
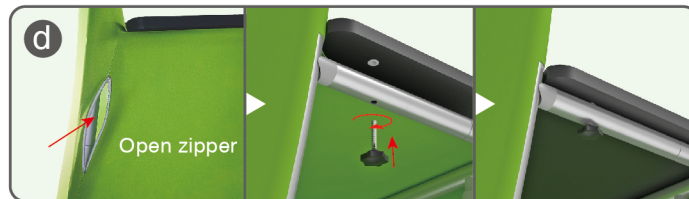
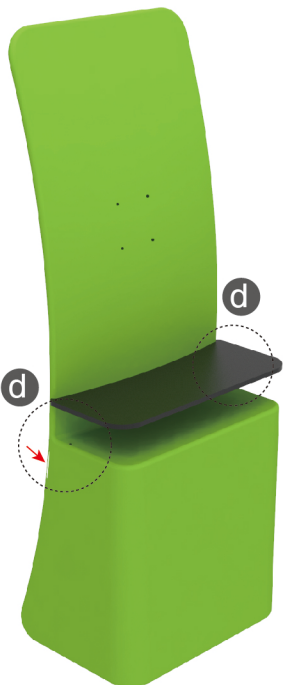


Zip up fabric graphic



### STEP 05

To put the counter top in position and unzip the zippers at 2 sides and use screw for fastening from bottom







## STEPS

(1) Durable Plastic Hard Case, Aluminum Support Poles

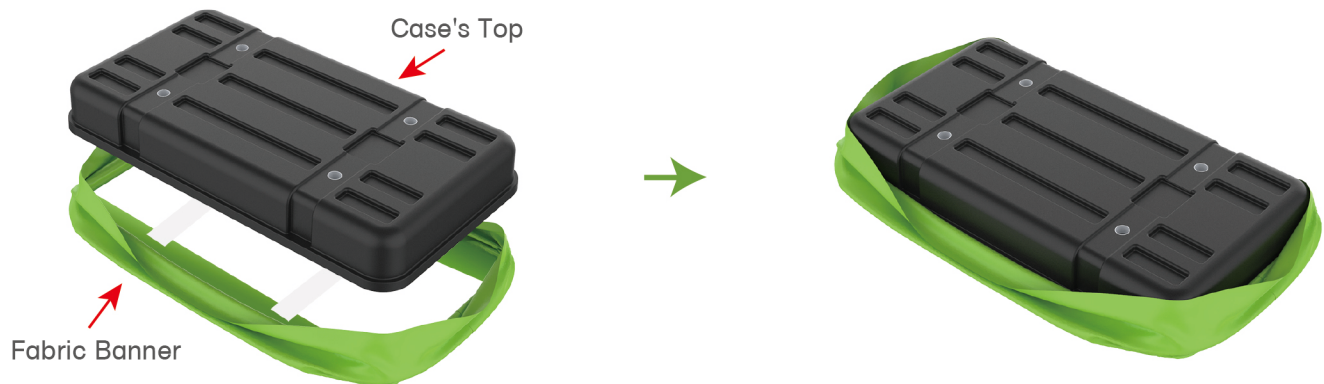


(2) Printed Graphic Fabric Banner



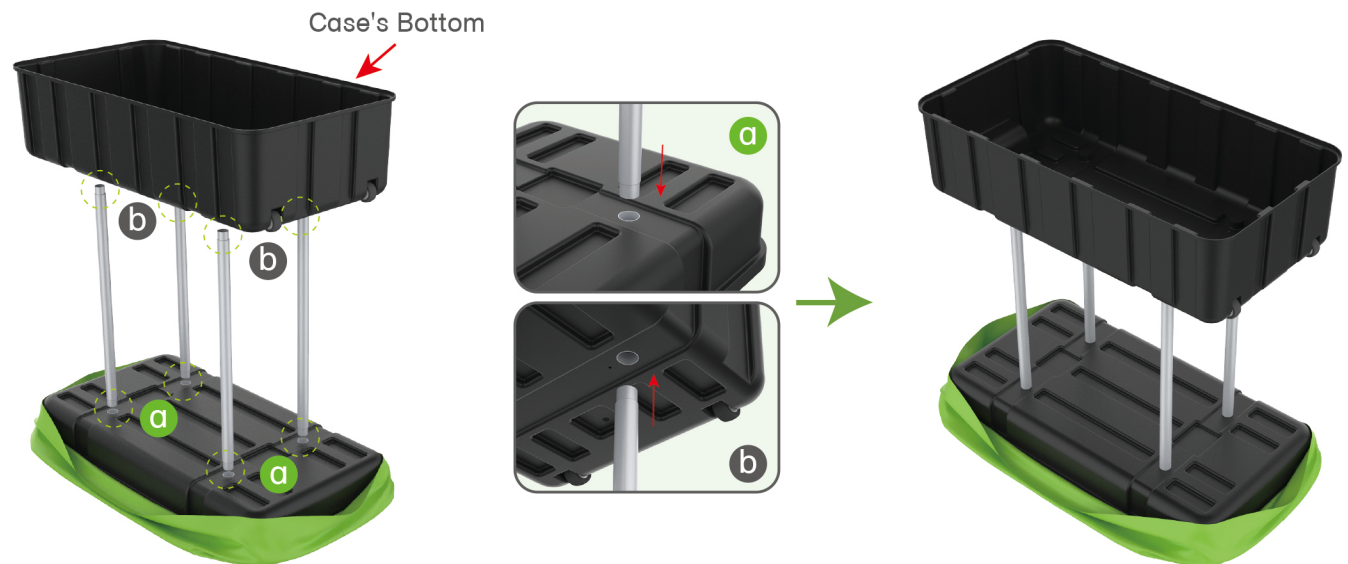
### STEP 01

Put hard case's top into fabric banner.



### STEP 02

Insert support poles into hard case's top & bottom.



### STEPS

#### STEP 04

Wrap fabric banner from bottom to top & twist it to be smooth, lay hard case's intermediate panel on podium's top.

